



Admiral®

T E A M W E A R 2 0 0 6

Admiral®

www.admiralcanada.com



Admiral Team Wear 2006

	Jerseys	3-10
	Shorts	10-12
	Socks	12-13
	OuterWear	14-17
	Elite Training	18-24
	GK Wear	25-27
	Ref	28
	Balls/Guards	29-30
	Bags	31-33
	Shoes	34-35



Santa Fe

SANTA FE #1025 YM – AXL

THE SANTA FE FEATURES ADMIRAL'S NEW AIRWICK MOISTURE MANAGEMENT FABRIC. QUICK DRY MESH INSERTS. A UNIQUE NECK DESIGN. DROPPED TAIL WITH COVERED BINDING.

GRW	GOLD/ROYAL/WHITE
NSW	NAVY/SCARLET/WHITE
RBW	ROYAL/BLACK/WHITE
WBS	WHITE/BLACK/SCARLET
SBW	SCARLET/BLACK/WHITE

HUNTER JERSEY #1011 YM - AXL

A FANTASTIC DESIGN. MICROWEAWE DRIFIT FABRIC. DROPPED TAIL. QUICK DRY MESH SIDE INSERTS. SCULPTED NECK LINE.

GRW	GOLD/ROYAL/WHITE
NSW	NAVY/SCARLET/WHITE

RBW	ROYAL/BLACK/WHITE
SBW	SCARLET/BLACK/WHITE



Hunter

Real



RBW

REAL #1026 YM - AXL

DEVELOPED IN ADMIRAL'S AIRWICK DRIFT FABRIC. OFFERING CONTRASTING DRIFT AND QUICK DRY MESH INSERTS. OUTLINED BY 5MM CONTRAST PIPING. 2 PIECE NECK DESIGN USING SELF FABRIC AND A 2 COLOUR KNITTED COLLAR. ACCENTUATED BY A MICRO MESH INSERT.



ROW



SBW



WWB

SBW	SCARLET/BLACK/WHITE
RBW	ROYAL/BLACK/WHITE
ROW	ROYAL/ROYAL/WHITE
WWB	WHITE/WHITE/BLACK



4

JUVE #1027 YM - AXL

THE JUVE IS ALSO PRODUCED IN ADMIRAL'S NEW 100% POLYESTER MOISTURE MANAGEMENT AIRWICK FABRIC. ENGINEERED WITH QUICK DRY MESH INSERTS TO KEEP THE BODY COOL. DROPPED TAIL WITH COVERED BINDING. INNOVATIVE NECK DESIGN FEATURING QUICK DRY MESH AND 3 x 1 DOUBLE LAYER RIB.



FBW



SBW



RBW



GRW

FBW	FOREST/BLACK/WHITE
GRW	GOLD/ROYAL/WHITE
RBW	ROYAL/BLACK/WHITE
SBW	SCARLET/BLACK/WHITE

Juve

PERU #1023 YM – AXL

100% AIRWICK POLYESTER MOISTURE MANAGEMENT FABRIC. QUICK DRY MESH INSERTS.
SCULPTED NECK LINE WITH CONTRAST MICRO MESH INSET.



RSW



SKWB



RBW



GBW



SBW



RGW



FBW

FWB FOREST/WHITE/BLACK
GBW GOLD/BLACK/WHITE
OBW ORANGE/BLACK/WHITE
RBW ROYAL/BLACK/WHITE
RGW ROYAL/GOLD/WHITE
RSW ROYAL/SCARLET/WHITE
SKWB SKY/WHITE/BLACK
SBW SCARLET/BLACK/WHITE



5

GRIMSBY JERSEY #1010 YM – AXL

SUBLIMATED MOISTURE MANAGEMENT PK DRIFIT HIGH SHEEN POLYESTER FABRIC. TARGET ENGINEERED INTO BACK FOR EASE OF PRINTING. ROUNDED & TIPPED CROSS OVER CREW EPIC NECK.



BRW



BLW



BSW

BRW BLACK/ROYAL/WHITE
BLW BLACK/WHITE

BSW BLACK/RED/WHITE
ROW ROYAL/WHITE



Grimsby

Romero



SKBW

ROMERO #1021 YM – AXL

THE ROMERO IS A CLASSIC DESIGN. PRODUCED IN ADMIRAL'S TECHNICAL AIRWICK DRIFIT FABRIC. CONTRAST QUICK DRY MESH INSERTS. A SCULPTED SELF COLLAR SURROUNDED BY QUICK DRY MESH. DROPPED TAIL.



RBW



SBW



GRW



NSW



SVBW

- GRW GOLD/ROYAL/WHITE
- NSW NAVY/SCARLET/WHITE
- RBW ROYAL/BLACK/WHITE
- SKBW SKY/BLACK/WHITE
- SVBW SILVER/BLACK/WHITE
- SBW SCARLET/BLACK/WHITE

PINNACLE JERSEY #1121 YM – AXL

MOISTURE MANAGEMENT PK DRIFIT HIGH SHEEN POLYESTER FABRIC. TAILORED COLLAR WITH DOUBLE OVERLAYS AND CONTRAST TIPPING. QUICK DRY MESH SIDE PANELS. DROPPED TAIL.



GRW



NSW



RBW

- NSW NAVY/SCARLET/WHITE
- RBW ROYAL/BLACK/WHITE
- GRW GOLD/ROYAL/WHITE

Pinnacle

VICTORY #1008 YS – AXL

THE VICTORY IS MANUFACTURED IN ADMIRAL'S 100% POLYESTER BPK MOISTURE MANAGEMENT FABRIC. OFFERING A SCULPTED QUICK DRY MESH COLLAR. QUICK DRY MESH INSERTS SURROUND THE PLAYERS BODY TO KEEP THE BODY COOL. ACCENTUATED BY CONTRAST 5MM BPK PIPING. DROPPED TAIL.

OBW ORANGE/BLACK/WHITE
PBW PURPLE/BLACK/WHITE
BSW BLACK/SCARLET/WHITE
EBW EMERALD/BLACK/WHITE
FBW FOREST/BLACK/WHITE
GBW GOLD/BLACK/WHITE
LBW LIME/BLACK/WHITE
MBW MAROON/BLACK/WHITE

NSW NAVY/SCARLET/WHITE
RBW ROYAL/BLACK/WHITE
SKBW SKY/BLACK/WHITE
SBW SCARLET/BLACK/WHITE
SVBW SILVER/BLACK/WHITE
TBW TEAL/BLACK/WHITE
WBS WHITE/BLACK/SCARLET



7



Victory

Aztec



FOW



SLW



ROG



GLR

AZTEC JERSEY #1120 YM – AXL

MOISTURE MANAGEMENT PK DRIFIT HIGH SHEEN POLYESTER FABRIC. CREW NECK. QUICK DRY MESH SIDE PANELS. DROPPED TAIL BACK WITH CONTRASTING BINDING.

GLR	GOLD/ROYAL	FOW	FOREST/WHITE
SLW	SCARLET/WHITE	ROG	ROYAL/GOLD



8

RACINE #1022 YM – AXL



RBW



MSKB



SBW

100% MOISTURE MANAGEMENT BPK POLYESTER. SCULPTED 2 COLOUR COLLAR. CONTRAST BPK AND QUICK DRY MESH INSERTS. DROPPED TAIL.

MSKB	MAROON/SKY/BLACK
RBW	ROYAL/BLACK/WHITE
SKBW	SKY/BLACK/WHITE
SBW	SCARLET/BLACK/WHITE



SKBW

Racine



TEB



MAW



LBM



GLB



SLW



FOW



ORB



PUW



EMW



NVW



SKB



ROW

SQUAD JERSEY #1007 YS – AXL

100% HIGH SHEEN VERTICALLY KNIT RIBBED POLYESTER. SCULPTED SELF FABRIC CROSS OVER V-NECK. CONTRASTING SIDE INSERTS AND 5MM CHEST PIPING.

ROW ROYAL/WHITE
EMW EMERALD/WHITE
FOW FOREST/WHITE
GLB GOLD/BLACK
LMB LIME/BLACK
MAW MAROON/WHITE

ORB ORANGE/BLACK
PUW PURPLE/WHITE
SKB SKY/BLACK
SLW RED/WHITE
TEB TEAL/BLACK
NVW NAVY/WHITE



Squad



BLW



FOW



GOLD



MAW



NVW



SLB



WHT



ROW



ROG

AZURO #1020 YM – AXL

MOISTURE MANAGEMENT BPK POLYESTER. CONTOURED NECK LINE WITH DOUBLE LAYER KNIT COLLAR AND SELF FABRIC INSERT. TONAL QUICK DRY MESH INSERTS. EMBROIDERED RIGHT BREAST AND BACK NECK LOGO FOR ADDED STYLE.

BLW	BLACK/WHITE	NVW	NAVY/WHITE
FOW	FOREST/WHITE	ROG	ROYAL/GOLD
GOLD	GOLD/GOLD	ROW	ROYAL/WHITE
MAW	MAROON/WHITE	SLB	SCARLET/BLACK
		WHT	WHITE/WHITE



TIEMPO SHORT #2405 YM – AXL

MOISTURE MANAGEMENT PK DRIFIT HIGH SHEEN POLYESTER FABRIC. FULL CUT. DOUBLE LAYER MICRO MESH PANELS ON FRONT LEG OPENING. ANATOMICAL SPEED VENTS. QUICK DRY MICRO MESH LINER.

ROG	ROYAL/GOLD	ROW	ROYAL/WHITE	NVW	NAVY/WHITE	WHB	WHITE/BLACK
-----	------------	-----	-------------	-----	------------	-----	-------------

NAPOLI SHORT #2023 YM - AXL

THE NAPOLI IS MADE WITH ADMIRAL'S NEW AIRWICK DRIFT FABRIC. QUICK DRY MESH INSERTS. WITH CONTRAST 5MM PIPING. COVERED WAISTBAND WITH INNER TIE CORD. UNLINED.

ROW ROYAL/WHITE

BLW BLACK/WHITE

ROG ROYAL/GOLD

BLS BLACK/SCARLET

NVW NAVY/WHITE



Napoli

LEEDS SHORT #2020 YM - AXL

MADE WITH ADMIRAL'S BPK DRIFT HIGH SHEEN POLYESTER FABRIC. THE LEEDS IS A LONG & FULL CUT SHORT. WITH TWO MICROMESH INSERTS FOR BREATHABILITY AND STYLE. FULL LINER.

Leeds



BLW BLACK/WHITE

ROW ROYAL/WHITE

FOW FOREST/WHITE

WHT ALL WHITE

SIRO SHORT #2410 YM - AXL

MICROWEAVE DRIFT FABRIC. ANATOMICAL LEG OPENING. QUICK DRY MESH INSERTS. COVERED WAISTBAND WITH CONTRASTING TIPPING AND OUR QUICK DRY MICRO MESH LINER.



BLW - BLACK/WHITE

WHT - WHITE/WHITE (FULL MESH LINER)

ROG - ROYAL/GOLD

Siro


EURO SHORT #2021 YM – AXL

ROW Royal/White

BLW Black/White

FOW Forest/White

NVW Navy/White

WHT White/White
(Full Liner)

A BPK moisture management short. The Euro is a full cut short, with micromesh inserts and contrast piping. The Euro is a favourite for players of all ages. Unlined (except White which is fitted with a full Quick Dry micro mesh liner.)



12

Roma #2009 YM – AXL


ROW Royal/White

BLW Black/White

WHB White/Black

The Roma is a ribbed 100% polyester short. Piping. Quick dry mesh inserts. Inside tie cord. Covered waistband. Unlined.

Team #2004 YS – AXL


BLW Black/White

ROW Royal/White

The Team short is a great fitting short. Manufactured using Admiral's 100% high sheen vertically knit ribbed polyester. This short is designed with a double needle cover stitch for a subtle contrast and extra durability. Unlined.

PULSE SHORT #2005 YS – AXL


BLW Black/White

ROW Royal/White

The Pulse is a 100% BPK polyester short. This moisture management short is accentuated with contrast piping and quick dry mesh inserts. Covered waistband with inside tie cord. Unlined.


ADMIRAL ANKLE SOCK #3550 ADULT

WHN White/Navy

Padded foot. Ribbed articulated arch support. Reinforced heel and toe.



MAW

BLS

WHB

BLW

WHF

FOW

WHR

NVW



WHT



ROW



ROG



SLW



GLB



WHS



GLR

PREMIER SOCK #3500 CHILD, YOUTH & ADULT

PREMIER MATCH QUALITY SOCK. RIBBED ARTICULATED ELASTIC ANKLE & ARCH SUPPORT. REINFORCED TOE AND HEEL. 95% NYLON AND 5% SPANDEX. DURABLE.



13

GLR Gold/Royal
WHR White/Royal
GLB Gold/Black
WHF White/Forest

WHB White/Black
BLW Black/White
WHS White/Red
WHT All White

SLW Red/White
NVW Navy/White
ROG Royal/Gold
MAW Maroon/White

BLS Black/Red
ROW Royal/White
FOW Forest/White



ROW

BLW

WHB

NVW

WHR

ROG

BLS

WHN

GLR

SUPERIOR SOCK #3600 CHILD, YOUTH & ADULT

THE SUPERIOR SOCK IS A PROFESSIONAL SOCK. PADDED FOOT. RIBBED ARTICULATED ELASTIC ANKLE & ARCH SUPPORT. KNITTED MESH AT LOWER BACK OF CALF AND ON THE FRONT ANKLE FOR BREATHABILITY. REINFORCED HEEL AND TOE.

BLW Black/White
ROW Royal/White
WHB White/Black

NVW Navy/White
WHR White/Royal
ROG Royal/Gold

BLS Black/Red
WHN White/Navy
GLR Gold/Royal

Superior



Post Game Time

Pre Game Time



ATTENTION

Avalon



Typhoon



Admiral

Legendary Outerwear

®

ATHENS SUIT #0802 YM – AXXL (INCL. YXL)



ROW



NVW



BRW



BSW



BFW



BLW



THE ATHENS SUIT IS THE HIGHEST QUALITY TRACKSUIT AVAILABLE. SOFT HIGH DENSITY TWILL FABRIC. WIND & RAIN RESISTANT. FULL MICRO MESH LINER. OPEN HEM. DROPPED TAIL. ELASTICIZED DRAW CORD WITH SLIDER. ZIPPERED POCKETS. STORM FLAP. VELCRO & ELASTIC STORM WRIST CLOSURE. MESH OVERLAYS. DOUBLE BEADED PIPING. DOUBLE NEEDLE CONTRAST STITCHING FOR DURABILITY. THE PANT IS ALSO FULLY LINED. ZIPPERED POCKETS AND ARCHED DOUBLE BEADED PIPING. TAILORING SYSTEM ALLOWS PANT LENGTH TO BE ADJUSTED UP TO 1 1/2 INCHES. LOWER LEG ZIPPER OPENING WITH CONTRASTING STORM GUSSET.

ROW	ROYAL/WHITE
BFW	BLACK/FOREST/WHITE
BRW	BLACK/ROYAL/WHITE
NVW	NAVY/WHITE
BLW	BLACK/WHITE
BSW	BLACK/SCARLET/WHITE



15

UNITED TRACKSUIT #0803

YM – AXL (INCL. YXL)

THE UNITED IS A PERFECT ALTERNATIVE TO A WATER RESISTANT SUIT. MADE USING OUR NEW STRETCH POLY PK FABRIC. THIS SUIT WAS DESIGNED FOR FUNCTIONAL TRAINING OR OFF FIELD WEAR. THIS PANT ALSO IS ENGINEERED WITH OUR NEW TAILORING FEATURE.

BSW	BLACK/SCARLET/WHITE
BRW	BLACK/ROYAL/WHITE



BSW



BRW

United



NVW

AVALON JACKET #0804J YM – AXXL (INCL. YXL)

100% HIGH COUNT COATED MICRO POLYESTER. WATER RESISTANT. MICRO MESH LINED. TWO EXTERIOR ZIPPERED POCKETS. INTERIOR EMBROIDERY OPENING. DROPPED TAIL. 3MM PIPING.

NVW NAVY/WHITE
BRW BLACK/ROYAL/WHITE

BSW BLACK/SCARLET/WHITE
BLW BLACK/WHITE



BSW



BRW



BLW


AVALON PANT #0804P YM – AXXL (INCL. YXL)

100% HIGH COUNT COATED MICRO POLYESTER. WATER RESISTANT. MICRO MESH LINED. NYLON TAFFETA LOWER LEG. ZIPPERED POCKETS. TAILORING SYSTEM ALLOWS PANT LENGTH TO BE ADJUSTED UP TO 1 1/2 INCHES. ELASTICIZED WAIST & DRAW CORD. LOWER LEG ZIPPER OPENING WITH STORM GUSSET.

BLW BLACK/WHITE

NVW NAVY/WHITE

TEKNO JACKET #0800J YM – AXXL (INCL. YXL)


ROW



BLW



NVW


TEKNO PANT #0800P YM – AXXL (INCL. YXL)

100% COATED NYLON SHELL PANT. WIND & WATER RESISTANT. SIDE SEAM POCKETS.

BLW BLACK/WHITE NVW NAVY/WHITE

100% COATED NYLON FULL ZIP SHELL JACKET. WIND & WATER RESISTANT. DROPPED TAIL. FRONT SLASH POCKETS.

ROW ROYAL/WHITE

BLW BLACK/WHITE

NVW NAVY/WHITE



HURRICANE PANT

#0805P
YS – AXL (INCL. YXL)

THIS WATERPROOF 100% NYLON PANT FEATURES MESH LINING FOR COMFORT. TWO SIDE SEAM POCKETS. LOWER LEG ZIPPERS WITH GUSSET AND CONTRAST STRIPES ON BOTH SIDES.

BLW Black/White
NVW Navy/White



TYPHOON JACKET #0805J

YS – AXL (INCL. YXL)

WATER-REPELLENT AND WINDPROOF. THE TYPHOON WILL PROTECT YOU FROM THE ELEMENTS. SEAM SEALED. MESH LINED. HIDE AWAY HOOD IN COLLAR. TWO FRONT ZIPPED POCKETS AND A MESH OPENING ON THE BACK FOR BREATHABILITY. A MUST HAVE FOR THE ELITE PLAYER!

BSW Black/Scarlet/White
BRW Black/Royal/White
BLW Black/White
NVW Navy/White



Typhoon



METRO JACKET #0807J

METRO PANT #0807P

YM – AXXL (INCL. YXL)

THIS WATER REPELLENT INSULATED JACKET FEATURES 200 GM INSULATION. STORM FLAP WITH SNAP CLOSURE. ZIPPED STORM POCKETS WITH SNAP CLOSURE. DETACHABLE INSULATED HOOD. THE PANT IS ALSO INSULATED. ZIPPED LEG.

BLK Black



17

REVOLUTION JACKET #0839 AXS – AXL

THIS COATED 100% OXFORD NYLON JACKET IS SEAM SEALED AND FLEECE LINED TO KEEP YOU COMPLETELY DRY AND VERY WARM ON COLD AND RAINY DAYS. THE REVOLUTION FEATURES A STORM FLAP WITH SNAP CLOSURE. LINED HOOD. INNER CHEST POCKET. COVERED ZIPPER POCKETS. ELASTICIZED VELCRO WRIST STORM CLOSURE.

BLK Black



Revolution

Elite Gear



When Only the **Best** will do.



Elite Gear
www.admiralcanada.com

HOODIE #0806 YL – AXL

100% Soft PK Drifit. The Hoodie is a full zip, hooded training piece which offers an open hem bottom, draw cord with toggle, contrast piping and micro mesh inserts add style and functionality.

BLW Black/White

WBS White/Black/Scarlet



Hoodie

STADIO PULLOVER #0808 YL – AXL

DESIGNED FOR COMFORT, THIS PULLOVER OFFERS ALL THE FEATURES AN ELITE PIECE SHOULD. Soft PK Drifit, THUMB HOLES AT THE CUFF, CONTRAST MESH INSERTS AND AN ERGONOMIC CUT. EMBROIDERED LOGO.

SVB Silver/Black

BSW Black/Scarlet/White

Stadio



SVB



BSW



19

EURO TRAINING PANT

0836 YL – AXL

PRODUCED TO BE THE IDEAL TRAINING PANT. TAPERED LEG WITH 9" ZIPPER ON BOTH CALVES WITH EMBROIDERED ADMIRAL LOGO'S FOR STYLE. TWO SIDE SLASH POCKETS MAKE THIS PANT A CHOICE PIECE ON COOL DAYS. 100% Soft PK Polyester.



SOLO LONG SLEEVE #1406 YL – AXL

100% Soft PK FABRIC. CONTRAST SELF COLLAR. CONTRAST MICRO MESH INSERTS OFFER THIS PIECE A LOOK YOU WILL NOT FIND ON OTHERS.

SVB Silver/Black
BLS Black/Scarlet
SKB Sky/Black



BLS



SVB



SKB

Solo

COASTAL PULLOVER #6166 YL – AXL

85/15 POLYESTER/COTTON PLATED FABRIC. KNITTED RIB CREW NECK & CUFF.
OPEN HEM. DRAW CORD WITH TOGGLE AND CONTRAST PIPING ACROSS THE CHEST.



BLK BLACK

ROY ROYAL

NVY NAVY

Raven



RAVEN PULLOVER #6500 YM – AXXXL

NVW NAVY/WHITE

BLW BLACK/WHITE

85% POLYESTER 15% COTTON. VERY SOFT AND DURABLE. RIBBED NECK TRIM AND CUFFS. OPEN HEM. ELASTICIZED DRAW CORD. DUAL CORD LOCKS.

Northern



BSV BLACK/SILVER

NORTHERN POLAR FLEECE 1/4 ZIP

6121 YL – AXL

100% POLYESTER MICRO POLAR FLEECE. AN OFF CENTRE ZIPPER MAKES THIS PIECE IDEAL FOR TRAINING ON THOSE COLD DAYS. ELASTIC WAIST AND CUFFS.



BLK

ROY

NVY

PC SHORT #2499 AM – AXL

THIS KNEE LENGTH SHORT WAS DESIGNED TO BE WORN OVER OTHER ITEMS OR ALONE WHEN TRAINING. IT FEATURES AN 8 INCH INSEAM AND WIDE LEG TO BE FUNCTIONAL DURING TRAINING. CONSTRUCTED WITH AN 85/15 POLY/COTTON PLATED FABRIC. THIS SHORT WAS MEANT TO LAST.

BLK BLACK

ROY ROYAL

NVY NAVY



TOUCHLINE POLO #6100 YL – AXL

A UNIQUE AND CLASSY LOOK MAKE THE TOUCHLINE POLO A FAVOURITE FOR TEAM MEMBERS AND SUPPORTERS. THE RAGLAN STYLE POLO IS CONSTRUCTED WITH OUR NEW AIR WICK DRIFIT FABRIC. FRONT ZIPPER WITH A TONAL SELF BACKING. MICRO MESH INSERTS UNDER THE ARMS ALLOW AIR FLOW TO COOL BODY. TAILORED COLLAR. CONTRAST PIPING.

BLW BLACK/WHITE NVW NAVY/WHITE WHB WHITE/BLACK
FOW FOREST/WHITE SLW SCARLET/WHITE ROW ROYAL/WHITE

Stadium

STADIUM PANT #0837

YM – AXXL (INCL. YXL)



ALL PURPOSE PANT. 100% COATED NYLON. FULL MICRO MESH LINER. POCKETS. WIND & WATER RESISTANT.

BLK BLACK

STADIUM PULLOVER #6120
YM – AXXL (INCL. YXL)

100% COATED NYLON. WATER AND WIND RESISTANT. DOUBLE LAYER 2 BY 2 RIBBED CREW NECK, CUFF AND WAIST. SIDE SEAM POCKETS.

BLW BLACK/WHITE
NVW NAVY/WHITE



21

MARK V POLO #6106 YL – AXL

THE MARK V IS DESIGNED TO BE WORN ON AND OFF OF THE SIDELINE. THE RAGLAN STYLE POLO IS CONSTRUCTED WITH OUR MICROWEAWE DRIFIT FABRIC. 5 BUTTON PLACKET. TAILORED COLLAR. SIDE VENT. PIPING.

ROY ROYAL BLK BLACK WHT WHITE NVY NAVY




LARNICA 1/4 ZIP #1402 YL – AXL

THE LARNICA IS A COMFORTABLE TOP MADE WITH ADMIRAL'S 100% AIRWICK POLYESTER. THIS IS A MOISTURE MANAGEMENT PIECE, WITH CONTRAST INSERTS FOR ADDED STYLE.

WHB WHITE/BLACK

NSV NAVY/SILVER

BSV BLACK/SILVER



22

Valencia
VALENCIA JERSEY #1404 YL – AXL

SOFT PK DRIFIT. CONTRASTING CREW NECK AND MICROMESH INSERT DOWN THE FRONT OF THE SHIRT FOR BREATHABILITY AND STYLE. GREAT AS AN ON OR OFF FIELD PIECE.

SVN SILVER/NAVY
NSK NAVY/SKY


GLOBAL SLEEVELESS
#1405 YL - AXL

AIRWICK DRIFIT BODY. CUT PIECE PANELS IN SHOULDER AND ON THE SIDES OF THE SHIRT ALLOW FOR AN ATHLETIC FIT. WITH A MICROMESH BACK FOR BREATHABILITY AND STYLE.

RSV ROYAL/SILVER WHB WHITE/BLACK BSV BLACK/SILVER

ProTraining

PRO TRAINING DF SHORT #2498 YL – AXL

MICROWEAVE DRIFIT FABRIC. 8 INCH INSEAM. WIDE LEG. FUNCTIONAL DURING TRAINING.

ROY ROYAL

BLK BLACK

WHT WHITE



BLK BLACK

COMPRESSION LONG SLEEVE SHIRT

#1403-LS YL – AXL

HIGH DENSITY 82/18 NYLON/LYCRA FABRIC. MOISTURE MANAGEMENT TECHNOLOGY REDUCES BODY TEMPERATURE & INCREASES COMFORT BY DRAWING PERSPIRATION AWAY FROM THE BODY.

WHT WHITE



BLK BLACK

COMPRESSION SHORT SLEEVE SHIRT

#1403 YL – AXL

HIGH DENSITY 82/18 NYLON/LYCRA FABRIC. MOISTURE MANAGEMENT TECHNOLOGY REDUCES BODY TEMPERATURE & INCREASES COMFORT BY DRAWING PERSPIRATION AWAY FROM THE BODY.



23

Compression

PT Jersey



COMPRESSION SHORT #2497 YL – AXL

HIGH DENSITY 82/18 NYLON/LYCRA FABRIC. WIDE COMFORTABLE COVERED WAISTBAND. REINFORCED SEAMS. DESIGNED TO PROVIDE COMFORT, SUPPORT & PROTECTION FROM FIELD ABRASIONS.

BLK BLACK WHT WHITE

PT JERSEY #6102 AS – AXL

MICROWEAVE DRIFIT FABRIC. TAPERED CUT. FORM FITTING. OPEN TAPERED SLEEVES. 3MM TIPPED V NECK.

BLK BLACK ROY ROYAL WHT WHITE





BLW Black/White



SLW Red/White



ROW Royal/White



WHB White/Black

FIERO JERSEY #1200 YL – AXL

Microweave Drifit fabric. Contrasting Retro crew neck. Comfortable on or off of the field.



24

Tactic**TACTIC SHORT #2496 YL – AXL**

THIS SHORT WAS BUILT FOR ON FIELD TRAINING OR OFF FIELD CASUAL WEAR. KNIT SHORT WITH ANATOMICALLY PLACED MESH FOR BREATHABILITY. PARTIAL ELASTICIZED WAIST BAND. INNER DRAWCORD. 100% POLYESTER.

Intense Pant**INTENSE PANT #0835 YL – AXL**

A FUNCTIONAL TRAINING PIECE. 100% POLYESTER. CONVERTIBLE PANT TO EURO CUT SHORT. TWO SLASH POCKETS. QUICK DRY MESH INSERTS FOR BREATHABILITY.

BSV Black/Silver

YS – AXL. 100% HEAVY WEIGHT COTTON T-SHIRT.

WHT
#0704GREY
#0707

GOAL KILLER

GOAL KILLER®



PORTO GK JERSEY #1808 YM – AXL

LBS Lime/Black/Silver
SKBS Sky/Black/Silver

MOISTURE MANAGEMENT BPK DRIFIT HIGH SHEEN
POLYESTER FABRIC. CUT PIECE DESIGN. SCULPTED PADDED
ELBOWS. CONTRAST PIPING.



LBS

BAHA GK SHORT #2583 YM – AXL

AN UPDATED ADMIRAL GK SHORT. 100% HEAVYWEIGHT POLYESTER FLAT PIQUE
FABRIC. DURABLE. FULL CUT. QUILTED PADDED HIPS. LARGE WAISTBAND AND
CONTRAST PIPING.

BSV Black/Silver



SKBS



BSV

BANKS GK JERSEY #1806 YS – AXL

THE BANKS IS A DURABLE LIGHT WEIGHT POLYESTER GK JERSEY. CONTRASTING OVERLOCK SEAMS. PADDED ELBOWS. SOFT DOUBLE LAYER YUKO TRIM AND CUFFS.

BSV BLACK/SILVER

GLB GOLD/BLACK

**SEVILLE GK PANT**

#2591 YM – AXL

100% HEAVYWEIGHT POLYESTER FLAT PIQUE FABRIC. QUILTED PADDED HIPS AND KNEES. LARGE WAISTBAND. CONTRAST SILVER PIPING. STIRRUPS.

BSV
BLACK/SILVER**Pez**#1809 YS – AXL
(INCL. YXL)

BRIGHT SUBLIMATED STRIPED GK JERSEY. DURATECH SHEEN POLYESTER. PICK RESISTANT. RAGLAN SLEEVE. 2 BY 2 CREW NECK. CUFFS. PADDED ELBOWS.



OSB ORANGE/SILVER/BLACK

**Padded Compression**REFLEX SHORT
#2581 AXS – AXL

THIS FULL CUT EMBOSSED MOISTURE MANAGEMENT DRI-FIT PK FABRIC. CONTRAST SIDE PANELS. NO PADS.

BSV BLACK/SILVER

GK PADDED
COMPRESSION SHORT
#2582 YL – AXL

HIGH DENSITY 82/18 NYLON/LYCRA FABRIC. WIDE COMFORTABLE COVERED WAISTBAND. REINFORCED SEAMS. REMOVABLE PERFORATED PADS. DESIGNED TO PROTECT KEEPERS FROM FIELD ABRASIONS.



PRO SAVE II #0509 Sizes: 6,7,8,9,10,11 Colours: White/Red/Black

THE PROFESSIONALS CHOICE. FULLY REDESIGNED FOR BETTER COMFORT AND PERFORMANCE. 5MM+3MM SUPER SOFT LATEX FOR SUPERIOR GRIP OF THE BALL. ROLLED THUMB FOR INCREASED SURFACE CONTACT. CONSTRUCTED WITH A LIGHTWEIGHT POLY/COTTON MESH BACKHAND FOR INCREASED BREATHABILITY AND ADDED FLEXIBILITY. NEW REMOVABLE ADMIRAL "PRO STICKS" DESIGNED TO GIVE ULTIMATE PROTECTION AGAINST HYPEREXTENSION BUT FLEXIBLE ENOUGH TO PROVIDE SMOOTH MOVEMENT OF THE HAND. SOFT RUBBERIZED TRANSPARENT WINDOWS ON MIDDLE TWO FINGERS ADD PERFORMANCE AND ALLOW VIEWING OF BRACES. BANDAGE WRIST TO STABILIZE THE FIT WITH FULL-WRAP VELCRO STRAP.



PROTECTOR II #0506

Sizes 6,7,8,9,10,11 Colours: Sky blue/White
4MM+3MM SUPER SOFT LATEX PROVIDES A TOP PROFESSIONAL PERFORMANCE PALM. SPLIT LATEX BACKHAND WITH MESH AND INVERSE STITCHING ADDS FLEXIBILITY, BREATHABILITY AND PROTECTION. BANDAGE WRIST TO STABILIZE THE FIT WITH FULL-WRAP VELCRO STRAP.



#0502 STAR

Sizes: 4,5,6,7,8,9,10

Colours: Red/Black/White

NEW 3MM + 3MM SOFT LATEX WITH EMBOSSED NOTCHES ON THE PALM FOR ADDED PROTECTION. INTERIOR LATEX FOR SUPERIOR FEEL OF THE BALL. FULL PU EMBOSSED BACKHAND. V NOTCH ENTRY FOR EASY ACCESS. EMBOSSED VELCRO STRAP FOR ADDED SUPPORT AND COMFORT.



#0507 MUNICH

Sizes: 5,6,7,8,9,10,11

Colours: Orange/Black/White

3MM+3MM SOFT LATEX WITH FULL LENGTH WIDE CUT CONSTRUCTION FOR SUPERIOR CONTACT OF THE BALL. ROLLED THUMB FOR INCREASED SURFACE CONTACT. V NOTCH ENTRY FOR EASY ACCESS. IDEAL MATCH GLOVE.



#0504 REFLEX

Sizes: 4,5,6,7,8,9

Colours: Sky blue/Black

NEW WHITE 3MM + 2MM DURABLE SYNTHETIC LATEX PROVIDES AN EXCELLENT GRIP. SPLIT BACKHAND PU WITH MESH MAKES THE GLOVE LIGHTWEIGHT AND FLEXIBLE. FULL-LENGTH WRIST STRAP ON ELASTIC BANDAGE STABILIZES THE WRIST. EXCELLENT GLOVE FOR THE BEGINNER GOALKEEPER.



#0500 GRIP

Sizes: 4,5,6,7,8,9

Colours: Lime/Black and Orange/Black

BREATHABLE NYLON HAND WITH 1MM DIMPLED RUBBER PALM AND FINGER OVERLAYS. EMBOSSED PVC BACKHAND. FULL-LENGTH ELASTIC BANDAGE WITH WRIST STRAP STABILIZES THE FIT.



#0513 FIELD PLAYER

Sizes 6,7,8,9,10

DESIGNED TO PROTECT FIELD PLAYERS FROM BITTER CONDITIONS. 85/15 STRETCH POLYESTER/COTTON FABRIC. BREATHABLE. RUBBER FINGER INSERTS PROVIDE GRIP FOR THROW INS.

LMB LIME/BLACK

ORB ORANGE/BLACK

CARDER REF JERSEY #1505 YL-AXL

MOISTURE MANAGEMENT BPK FABRIC. 2 PART VELCRO PATCH FOR ASSOCIATION BADGES. TONAL MICROMESH INSERTS FOR BREATHABILITY AND STYLE.



SLB SCARLET/BLACK



BLW BLACK/WHITE



GLB GOLD/BLACK

Official Ref Jersey

OFFICIAL REF JERSEY #1502 (SHORT SLEEVE) & #1503 (LONG SLEEVE) YL – AXL (INCL. YXL)

100% HIGH SHEEN VERTICALLY KNIT RIBBED POLYESTER. SCULPTED SELF FABRIC CROSS OVER V-NECK. 2 PART VELCRO PATCH FOR ASSOCIATION BADGES. ONE BREAST POCKET. CONTRAST V NECK & COLLAR.



DEUS JERSEY #1500 YL – AXL

PREMIER REF SOCK

#3500NL
CHILD,
YOUTH,
ADULT

CARDER REF SHORT

#2501 YL – AXL

PLEATED SHORT. SIDE SEAM & BACK POCKETS. MICRO MESH INSERTS ON BACK FOR AIR FLOW.



BLK - BLACK

MOISTURE MANAGEMENT PK DRIFIT HIGH SHEEN POLYESTER FABRIC. 2 PART VELCRO PATCH FOR ASSOCIATION BADGES. 2 BREAST POCKETS WITH BUTTON CLOSURES.

PREMIER QUALITY SOCK. RIBBED ARTICULATED ELASTIC ANKLE & ARCH SUPPORT. REINFORCED TOE AND HEEL. 95% NYLON AND 5% SPANDEX. DURABLE.



#4600 Premier Cup Size 4 & 5
INTERNATIONAL MATCH BALL. UPDATED COLOR FOR 2006.
SEMI-GLOSS 1.8 MM JAPANESE CORDLEY. LATEX BLADDER.
3 PLY + 1 FOAM LAMINATION.



WSB SCARLET/BLACK



WRB ROYAL/BLACK

#4034 ION Sizes 3, 4, & 5
ENGINEERED TO LAST. FEATURING OUR NEW HIGH DENSITY CARBONIUM
LAMINATION AND BUTYL BLADDER. 4 PLY PV LAMINATION



#4080 Match 18 Ball Size 4 & 5
SUPERIOR MATCH BALL. 1.6MM MICROFIBRE PU
COVER. 4 PLY PV LAMINATION. HIGH QUALITY
SUPER LATEX BLADDER. FIFA INSPECTED.



#4043 Raider Sizes 3, 4 & 5
THE RAIDER IS A TRAINING BALL CONSTRUCTED FROM A 1.5MM PVC COVER.
4 PLY PV LAMINATION AND BUTYL BLADDER. CUSTOMIZATION AVAILABLE.



29



#4040 Cyclone Ball Size 4 & 5
PROFESSIONAL QUALITY MATCH BALL IS
CONSTRUCTED WITH A 2.0MM KOREAN PU. THIS
LUNAR SILVER BALL HAS A 4 PLY PV LAMINATION.
SOFT AND LIVELY. THIS MATCH BALL IS A
FAVORITE OF PLAYERS OF ALL AGES. AIR
RETENTIVE LATEX BLADDER.

#4075 Pro Flight Sizes 4 & 5
COMPETITIVE MATCH BALL. SOFT AND LIVELY. KOREAN
PU LAMINATION. LATEX BLADDER. SUPERIOR BALL.

#4078 Xtreme Ball Size 4 & 5
MATCH BALL. 1.6MM IMPORTED PU COVER.
4 PLY PV LAMINATION. HIGH QUALITY
SUPER LATEX BLADDER. FIFA APPROVED



WSKB WHITE/SKY/BLACK WSB WHITE/SCARLET/BLACK GSB GOLD/SCARLET/BLACK

4077 Mini Xtreme Size 2
SKILLS BALL. 32 PANEL PVC LAMINATION.





#4600 Premier Cup Size 4 & 5
INTERNATIONAL MATCH BALL. UPDATED COLOR FOR 2006.
SEMI-GLOSS 1.8 MM JAPANESE CORDLEY. LATEX BLADDER.
3 PLY + 1 FOAM LAMINATION.



WSB SCARLET/BLACK



WRB ROYAL/BLACK

#4034 ION Sizes 3, 4, & 5
ENGINEERED TO LAST. FEATURING OUR NEW HIGH DENSITY CARBONIUM
LAMINATION AND BUTYL BLADDER. 4 PLY PV LAMINATION



#4080 Match 18 Ball Size 4 & 5
SUPERIOR MATCH BALL. 1.6MM MICROFIBRE PU
COVER. 4 PLY PV LAMINATION. HIGH QUALITY
SUPER LATEX BLADDER. FIFA INSPECTED.



#4043 Raider Sizes 3, 4 & 5
THE RAIDER IS A TRAINING BALL CONSTRUCTED FROM A 1.5MM PVC COVER.
4 PLY PV LAMINATION AND BUTYL BLADDER. CUSTOMIZATION AVAILABLE.



29



#4040 Cyclone Ball Size 4 & 5
PROFESSIONAL QUALITY MATCH BALL IS
CONSTRUCTED WITH A 2.0MM KOREAN PU. THIS
LUNAR SILVER BALL HAS A 4 PLY PV LAMINATION.
SOFT AND LIVELY. THIS MATCH BALL IS A
FAVORITE OF PLAYERS OF ALL AGES. AIR
RETENTIVE LATEX BLADDER.



#4075 Pro Flight Sizes 4 & 5
COMPETITIVE MATCH BALL. SOFT AND LIVELY. KOREAN
PU LAMINATION. LATEX BLADDER. SUPERIOR BALL.

#4078 Xtreme Ball Size 4 & 5
MATCH BALL. 1.6MM IMPORTED PU COVER.
4 PLY PV LAMINATION. HIGH QUALITY
SUPER LATEX BLADDER. FIFA APPROVED



WSKB WHITE/SKY/BLACK WSB WHITE/SCARLET/BLACK GSB GOLD/SCARLET/BLACK

4077 Mini Xtreme Size 2
SKILLS BALL. 32 PANEL PVC LAMINATION.



#0908 -130 AIR SHOCK Senior and Junior

Updated for 2006. HARD TRANSPARENT PE SHELL. PRINTED EVA FOAM WITH EMBOSSED AIR CHANNEL FOR MAXIMUM VENTILATION. VELCRO CALF STRAP WITH BUCKLE. COMPRESSED FOAM ANKLE AND LOWER LEG PROTECTION.



#0906 PROTECTOR Sizes XXS, XS, S

PE SHELL. PERFORATED EVA BACKING FOR VENTILATION. VELCRO CALF STRAP WITH BUCKLE. COMPRESSED FOAM ANKLE AND LOWER LEG PROTECTION.



#0907 - 210 SHINPRO XXS, XS, S, M, L

THE SHINPRO FEATURES FLEXIBLE INSERTS. POROUS EVA BACKING. ELASTICIZED STIRRUP. SECURITY CALF STRAP AND PADDED ANKLE.



#0913 GLADIATOR SIZES M, L

ERGONOMICAL PE SHELL. PERFORATED EVA BACKING FOR VENTILATION. VELCRO CALF STRAP WITH BUCKLE. COMPRESSED FOAM ANKLE AND LOWER LEG PROTECTION.



#0926 SOLO SIZES S, L

MOULDED EVA BACKING FOR SHOCK ABSORPTION. PE OUTER SHELL. ELASTICIZED VELCRO STRAPS HOLD THE GUARD IN PLACE.



#0912 ERGO IMPACT Sizes XXS, XS, S, M, L COLOUR #1800 PINK/PINK/WHITE

FEATURES INCLUDE AN ERGONOMIC FLEXIBLE DESIGN. LARGE CENTER SHIN SPLINT PROTECTS AGAINST SHARP BLOWS. PRINTED DURABLE NYLON COVER. POLYESTER PADDED BACKING PROVIDES COMFORT AND SHOCK MANAGEMENT. STEP IN STRETCH ANKLE SOCK WITH PADDED ANKLE FOR NECESSARY PROTECTION. ERGO CALF CLOSURE SYSTEM HOLDS GUARD FIRMLY IN PLACE.



#0912 ERGO IMPACT Sizes XXS, XS, S, M, L COLOUR #130 BLACK/SCARLET/WHITE





SBW



RBW



NVW



BLW



ROW



FIELD BACKPACK #0909 18" x 17" x 9"

600 D POLYESTER. TWO SIDE POCKETS WITH MESH PANELS. FRONT BALL POCKET WITH MESH PANELS. ADJUSTABLE, PADDED SHOULDER STRAPS. LARGE MAIN COMPARTMENT WITH U SHAPED OPENING. #10 INDUSTRIAL ZIPPERS ON MAIN COMPARTMENT AND #8 INDUSTRIAL ZIPPERS ON SIDE.

- ROW ROYAL/WHITE
- RBW ROYAL/BLACK/WHITE
- SBW SCARLET/BLACK/WHITE
- BLW BLACK/WHITE
- NVW NAVY/WHITE



BSW



ROW

ROG



BLW



BFW

BRW



NVW

MBW

GENESIS BAG #0910 24" x 14" x 15"

420D BRIGHT NYLON WITH PU BACKING. WATER REPELLANT. 2 SCULPTED END POCKETS. SIDE ZIPPERED POCKET. LARGE MAIN COMPARTMENT WITH U SHAPED OPENING. #10 INDUSTRIAL ZIPPERS ON MAIN COMPARTMENT AND #8 INDUSTRIAL ZIPPERS ON ENDS AND SIDE. REMOVABLE PADDED SHOULDER STRAP. VELCRO HANDLE WRAP.

BSW Black/Red/White
BLW Black/White

ROW ROYAL/WHITE
ROG ROYAL/GOLD

BFW BLACK/FOREST/WHITE
BRW BLACK/ROYAL/WHITE

NVW NAVY/WHITE
MBW MAROON/BLACK/WHITE



RBW

OLYMPICO BAG #0902

24" x 12" x 12"

THE OLYMPICO BAG IS MADE OF 600D POLYESTER. TWO SEPARATE SIDE POCKETS, ONE OF WHICH IS A VENTILATED WET/DRY COMPARTMENT. ALLOW FOR STORAGE OF FOOTWEAR, A BALL OR WET CLOTHING. #10 INDUSTRIAL ZIPPERS ON MAIN COMPARTMENT. #8 LIGHT INDUSTRIAL ZIPPERS ON THE SIDES. REMOVABLE PADDED SHOULDER STRAP. VELCRO HANDLE WRAP. CONTRAST PIPING.



FBW

BLW



SBW

NVW



ROW

MBW

RBW ROYAL/BLACK/WHITE
FBW FOREST/BLACK/WHITE

SBW SCARLET/BLACK/WHITE
BLW BLACK/WHITE

MBW MAROON/BLACK/WHITE
ROW ROYAL/WHITE

NVW NAVY/WHITE



#0900 SHOE BAG

14" x 4.5" x 5.25"

420D NYLON. ZIPPERED CHANGE POCKET & REINFORCED HANDLE.

BLK BLACK



#0920 TEAM MEGAHDALL

32" x 14" x 15"

DESIGNED FOR ALL OF YOUR TEAM'S LARGER ITEMS INCLUDING UNIFORMS, BALLS, TRAINING EQUIPMENT, WATER BOTTLES, AND GOAL NETS.



#0923 DELUXE

FOOTWEAR/ACCESSORY BAG

14" x 9" x 5"

600D POLYESTER. DOUBLE ZIPPER PULL. VELCRO CLOSURE. WEB HANDLE & SHOULDER STRAP.

BLK BLACK



#0922 SIDELINE SHOULDER BAG

18" x 13" x 6"

THE SIDELINE SHOULDER BAG IS PERFECT FOR COACHES AND MANAGERS. 600D POLYESTER. TONAL ADMIRAL LOGO ON FRONT FLAP.

BLK BLACK



33



#0918MD (15 BALL),

#0918LG (25 BALL)

BALL/ EQUIPMENT BAG

THE BALL AND EQUIPMENT BAGS ARE DESIGNED TO BE TOTALLY FUNCTIONAL FOR THE COACH. 420D NYLON. HEAVYWEIGHT MESH. PADDED SHOULDER STRAP. PULL CLOSURE WITH TOGGLE. REINFORCED BOTTOM.

BLW BLACK/WHITE



#0924 DRAWSTRING SHOULDER BAG

19" x 15.5"

420D NYLON. GROMMETS. ADJUSTABLE SHOULDER BRAID. PRINTED LOGO.

ROY ROYAL BLK BLACK NVY NAVY

OLYMPICO BAG JR

#0902-JR

20" x 11" x 11"



THE OLYMPICO JR IS A SMALLER VERSION OF THE ORIGINAL. IT IS MADE OF THE SAME 600D POLYESTER. TWO SEPARATE SIDE POCKETS, ONE OF WHICH IS A VENTILATED WET/DRY COMPARTMENT. ALLOW FOR STORAGE OF FOOTWEAR, A BALL OR WET CLOTHING. THIS BAG IS GREAT AS A COACHES KIT BAG, OR SIMPLY AS A SMALL ALTERNATIVE.

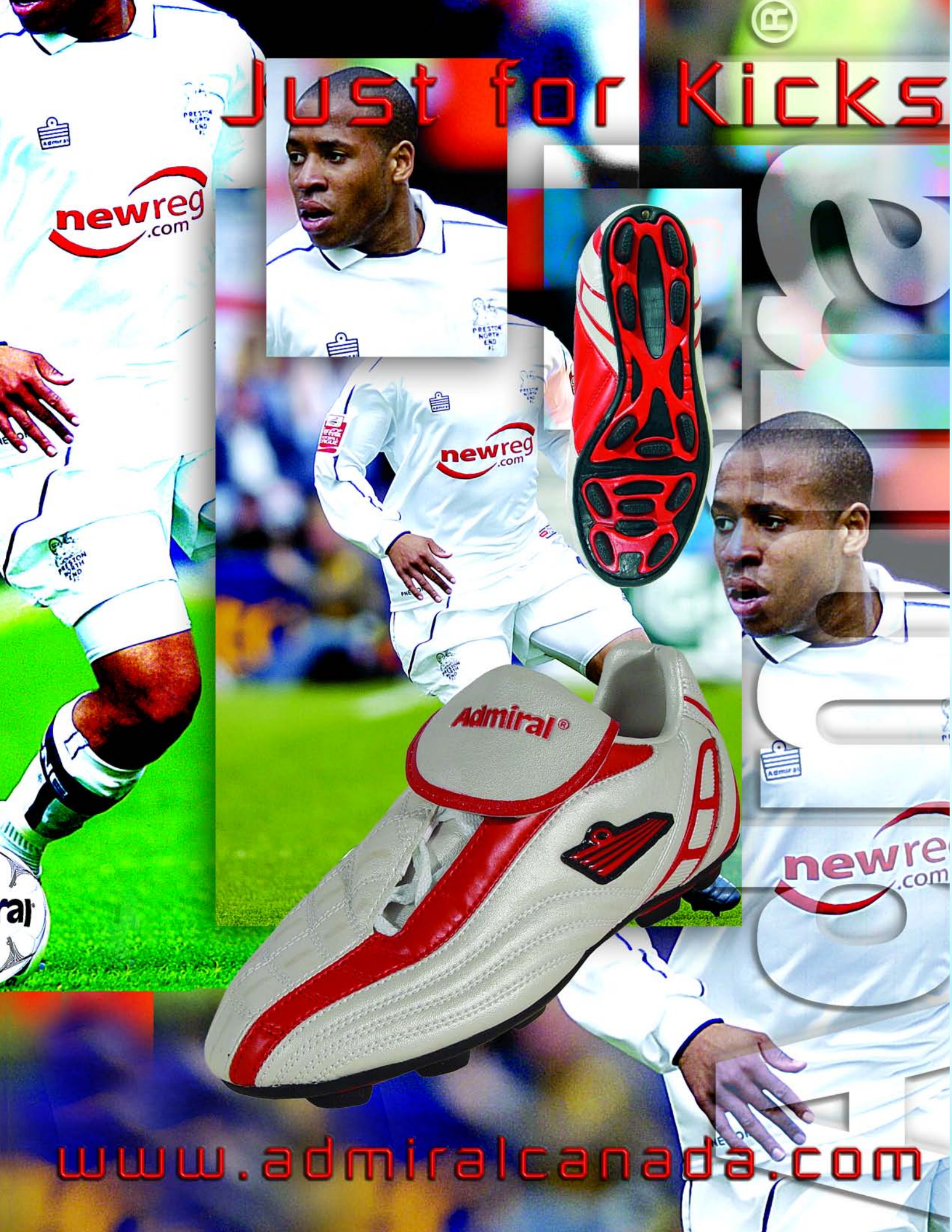
BLW BLACK/WHITE

EURO BAG #0921 20.5" x 15" x 12.5"

UPRIGHT BAG. SEPARATE BOTTOM COMPARTMENT FOR FOOTWEAR AND WET CLOTHING. 600D POLYESTER. *10 INDUSTRIAL ZIPPERS ON MAIN COMPARTMENT. *8 LIGHT INDUSTRIAL ZIPPERS ON BOTTOM. REMOVABLE PADDED SHOULDER STRAP. VELCRO HANDLE WRAP. DOUBLE BEADED CONTRAST PIPING.

BLW BLACK/WHITE





Just for Kicks

newreg.com

newreg.com

Admiral®

newreg.com

www.admiralcanada.com

Striker



STRIKER MRT #9048-JR
SIZES: 7 – 1 (FULL SIZES)
& 1.5 – 6 (HALF SIZES)

STRIKER MRT # 9048-SR
SIZES: 6.5 – 12

BSW BLACK/SCARLET/WHITE (OFFERED IN JR SIZES)
PESB PEARL/SCARLET/BLACK (OFFERED IN JR & SR SIZES)

THE ADMIRAL STRIKER MRT FEATURES OUR DUAL DENSITY MOLDED RUBBER TRACTION OUTSOLE. THE SOFT TOUCH DURABLE ACTION LEATHER UPPER IS EMBOSSED TO OFFER CONTROL WHERE IT IS REQUIRED. FOLD OVER TONGUE.



PESB

BSW

Cup MPT

CUP MPT #9970 SIZES: 4 – 12

THE CUP IS A GREAT SHOE. IT FEATURES A SUPPLE FULL GRAIN LEATHER UPPER. DUAL DENSITY STITCHED ON PU TRACTION OUTSOLE. FOLD OVER TONGUE.



35

X9 MPT

#9050 SIZES: 6 – 12

MPT MOLDED PU TRACTION

THE X9 GIVES YOU 3 OUTSOLES TO CHOOSE FROM DEPENDING UPON THE SURFACE THAT YOU ARE PLAYING ON. OUR PADDED MICRON LEATHER IS SOFT TO THE TOUCH. DURABLE. STITCHED AND RIVETED OUTSOLES. FOLD OVER TONGUE.



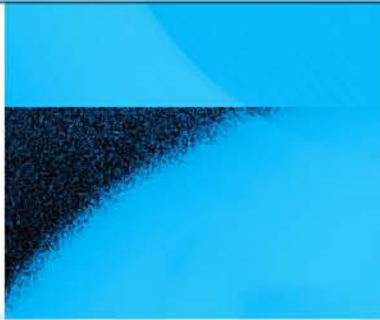
X3 ID

X3 ID #9047JR SIZES: 10 – 1 (FULL SIZES)
& 1.5 – 6 (HALF SIZES)

#9045SR SIZES: 6.5 – 12

THE LOW PROFILE MULTI PURPOSE X3 ID IS GREAT ON INDOOR SURFACES. SOFT DURABLE K-LEATHER UPPER. GUM RUBBER SOLE WITH EVA INSERT.





ADMIRAL CANADA INC.

81 Granton Dr #2

Richmond Hill, ON

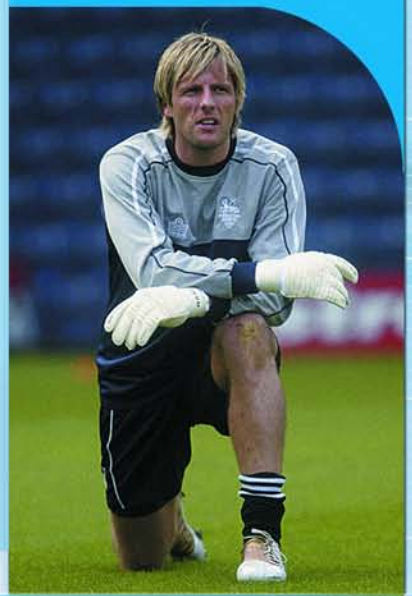
L4B 2N5 CANADA

Tel: (905) 731-5890

1 888 646-6822

Fax: (905) 731-3160

info@admiralcanada.com



ADMIRAL CANADA INC. IS A DIVISION OF
THE AXIS SPORTS GROUP OF COMPANIES