

Admiral

2007  
PRODUCTS



FOW

GLR



MAW

NVW



BLW

ORW



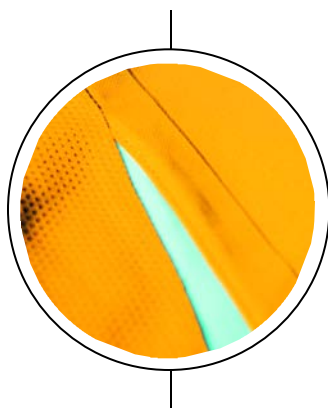
SLW

WHT



ROG

ROW



SOLANO



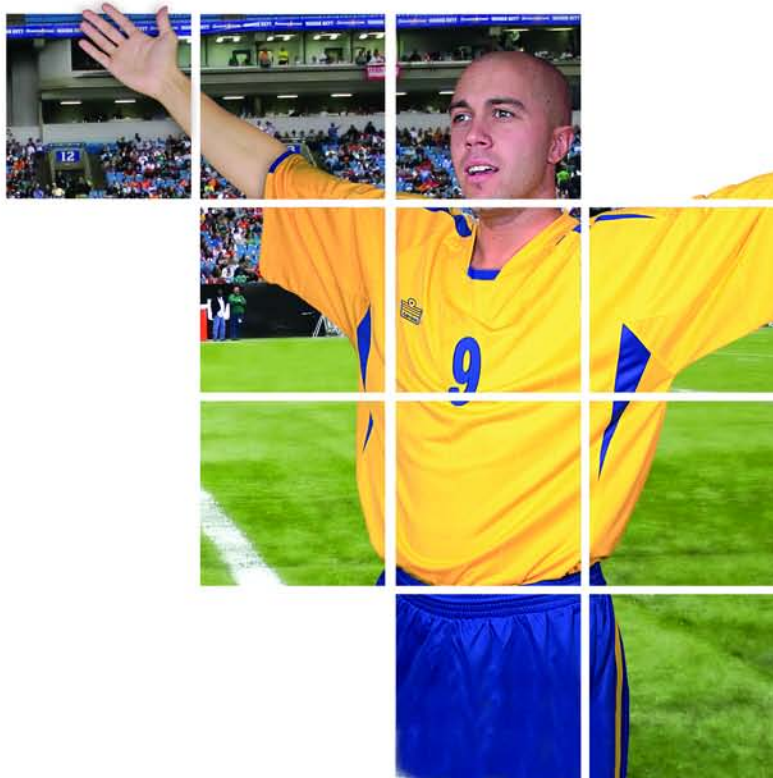
SOLANO

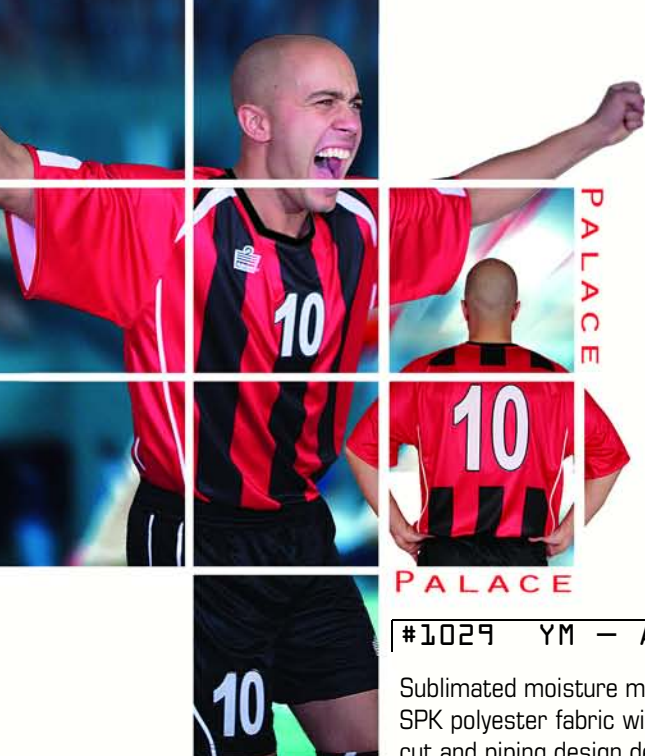
### #1031 YM — AXL

The Solano features Admiral's NEW Soft Knit polyester fabric with drop needle construction which provides a unique surface texture. This moisture management jersey is further enhanced with quick dry mesh inserts for both design and performance. A truly professional look.

BLW - BLACK/WHITE  
GLR - GOLD/ROYAL  
NVW - NAVY/WHITE  
ROG - ROYAL/GOLD  
SLW - SCARLET/WHITE

FOW - FOREST/WHITE  
MAW - MAROON/WHITE  
ORW - ORANGE/WHITE  
ROW - ROYAL/WHITE  
WHT - WHITE/WHITE





PALACE

#1029 YM - AXL

Sublimated moisture management SPK polyester fabric with integrated cut and piping design detailing. Target engineered into back for ease of printing. Self-fabric low profile neck. Drop tail with covered binding. A fresh take on the traditional vertical stripe design!

BLW - BLACK/WHITE

GRW - GOLD/ROYAL/WHITE

ROW - ROYAL/WHITE

EBW - EMERALD/BLACK/WHITE

RBW - ROYAL/BLACK/WHITE

SBW - SCARLET/BLACK/WHITE



BLW



RBW



GRW



ERW



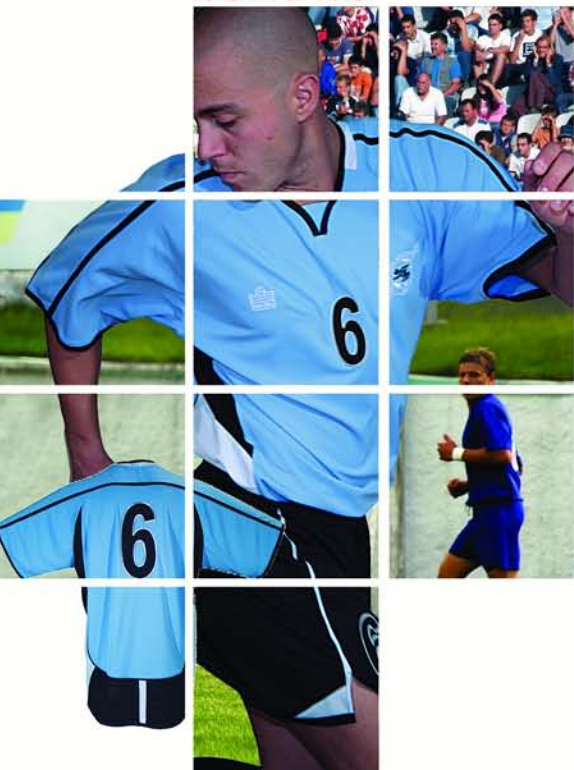
ROW



SBW



ROMERO



#1021 YM - AXL

The Romero is a classic design, produced in Admiral's technical Airwick moisture management fabric. Contrast quick dry mesh inserts. A sculpted self collar surrounded by quick dry mesh. Dropped tail.

RBW - ROYAL/BLACK/WHITE

SKBW - SKY/BLACK/WHITE

NSW - NAVY/SCARLET/WHITE

SBW - SCARLET/BLACK/WHITE

GRW - GOLD/ROYAL/WHITE



SKBW



SBW



NSW



RBW



GRW





ROW

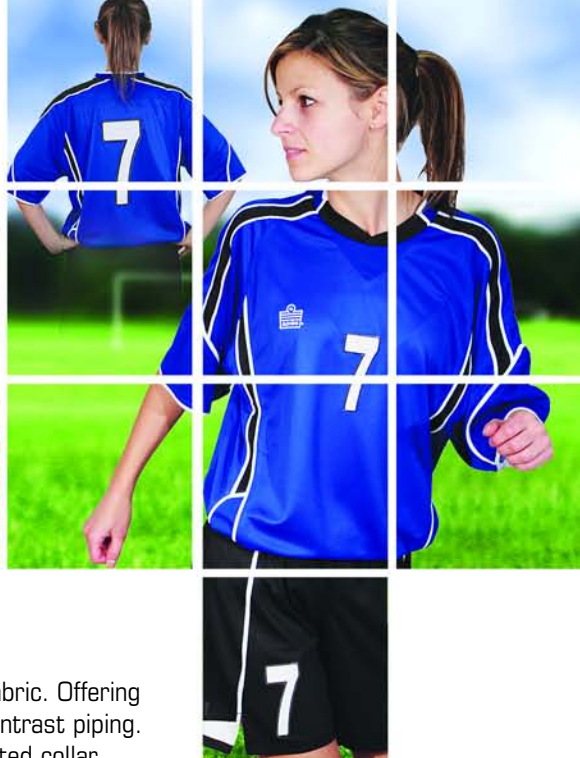


WWB



REAL

REAL



FBW



SBW



RBW

### #1026 YM — AXL

Developed in Admiral's Airwick moisture management fabric. Offering contrasting quick dry mesh inserts, outlined by 5mm contrast piping. 2 piece neck design using self fabric and a 2 colour knitted collar, accentuated by a micro mesh insert.

- RBW — ROYAL/BLACK/WHITE
- ROW — ROYAL/ROYAL/WHITE
- SBW — SCARLET/BLACK/WHITE
- WWB — WHITE/WHITE/BLACK
- FBW — FOREST/BLACK/WHITE



RSW



SKWB



RGW



RBW

### #1023 YM — AXL

100% Airwick polyester moisture management fabric. Quick Dry mesh inserts. Sculpted neck line with contrast micro mesh inset.

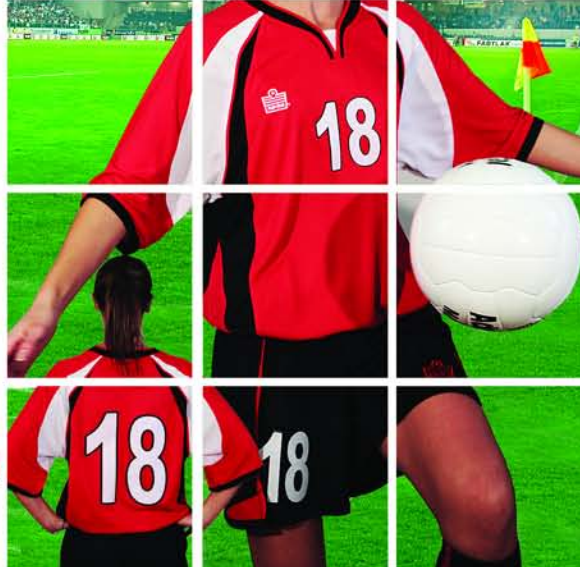
- RBW — ROYAL/BLACK/WHITE
- RGW — ROYAL/GOLD/WHITE
- RSW — ROYAL/SCARLET/WHITE
- SKWB — SKY/WHITE/BLACK
- SBW — SCARLET/BLACK/WHITE



SBW

PERU

PERU





SBW



WBS



BSW



LBW



OBW



FBW



SKBW



EBW



MBW



TBW



PBW



NSW



GBW



SVBW



RBW

#1009 YS - AXL

The Lazio is manufactured in Admiral's 100% Polyester BPK Moisture management fabric. Contrast 5 mm elastic neck binding provides a comfortable fit. Quick dry mesh inserts provides further performance comfort. Contrast overlay stripes and drop tail with covered binding completes the look.

BSW - BLACK/SCARLET/WHITE

EBW - EMERALD/BLACK/WHITE

FBW - FOREST/BLACK/WHITE

GBW - GOLD/BLACK/WHITE

LBW - LIME/BLACK/WHITE

MBW - MAROON/BLACK/WHITE

NSW - NAVY/SCARLET/WHITE

OBW - ORANGE/BLACK/WHITE

PBW - PURPLE/BLACK/WHITE

RBW - ROYAL/BLACK/WHITE

SKBW - SKY/BLACK/WHITE

SBW - SCARLET/BLACK/WHITE

SVBW - SILVER/BLACK/WHITE

TBW - TEAL/BLACK/WHITE

WBS - WHITE/BLACK/SCARLET





GBW



RBW



NSW



FBW



WBS



SBW



SKBW



VICTORY  
VICTORY



## #1008 YS - AXL

The Victory is manufactured in Admiral's 100% Polyester BPK Moisture management fabric. Offering a sculpted quick dry mesh collar. Quick dry mesh inserts surround the players body to keep the body cool, accentuated by contrast 5mm BPK piping. Dropped tail.

GBW - GOLD/BLACK/WHITE

RBW - ROYAL/BLACK/WHITE

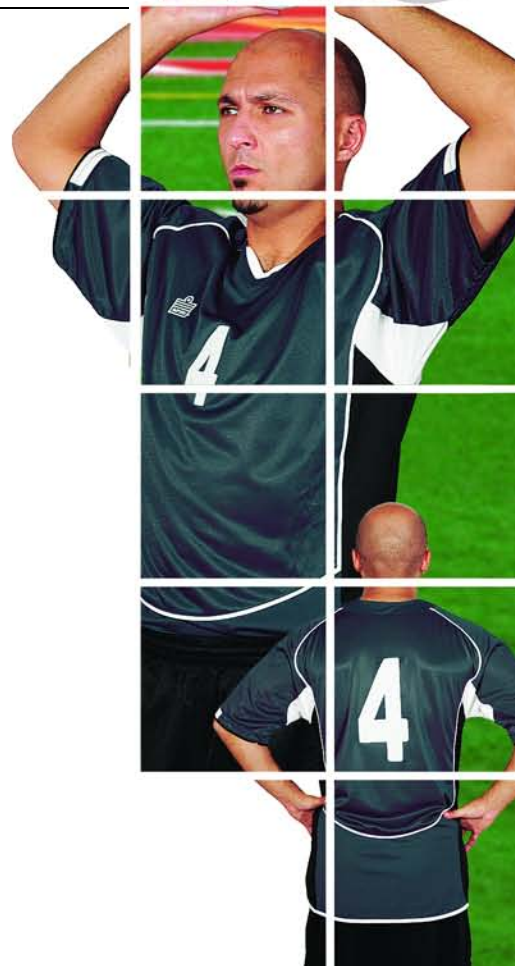
FBW - FOREST/BLACK/WHITE

WBS - WHITE/BLACK/SCARLET

SBW - SCARLET/BLACK/WHITE

SKBW - SKY/BLACK/WHITE

NSW - NAVY/SCARLET/WHITE





AZURO  
AZURO



GLR



BLW



GOLD



ROW



MAW



NVW



ROG



SLW



WHT

#1020 YS - AXL

Moisture management BPK Polyester. Contoured neck line with double layer knit collar and self fabric insert. Tonal Quick Dry mesh inserts. Embroidered right breast and back neck logo for added style. The perfect classic look built to meet today's performance requirements.

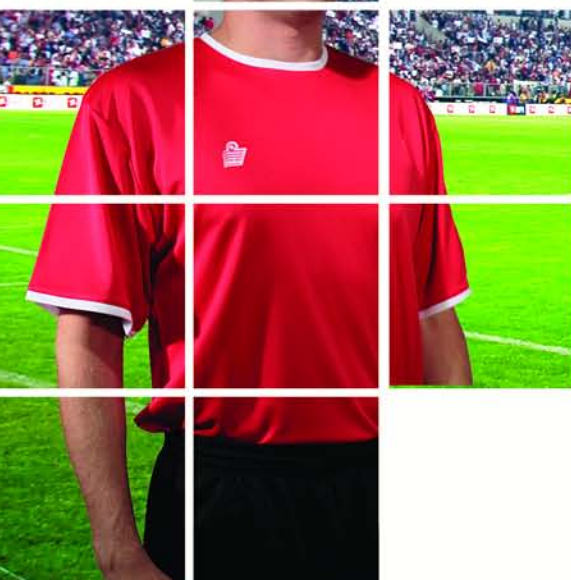


BLW - BLACK/WHITE  
NVW - NAVY/WHITE  
SLW - SCARLET/WHITE

GOLD - GOLD/GOLD  
ROG - ROYAL/GOLD  
WHT - WHITE/WHITE

MAW - MAROON/WHITE  
ROW - ROYAL/WHITE  
GLR - GOLD/ROYAL

FIERO II



FIERO II



BLW



FOW



SLW

#1028 YM - AXL

Updated for 2007, the Fiero II will feature our new Soft Polyester Knit fabric. This contemporary moisture management fabric meets retro crew neck design. Comfortable on or off of the field.

BLW - BLACK/WHITE  
ROW - ROYAL/WHITE  
NVW - NAVY/WHITE

FOW - FOREST/WHITE  
SLW - RED/WHITE  
WHB - WHITE/BLACK



ROW



NVW



WHB



FOW – FOREST/WHITE

NVW – NAVY/WHITE

ROW – ROYAL/WHITE

## #2021 YM – AXL

A BPK moisture management short. The Euro is a full cut short, with micromesh inserts and contrast piping. Unlined (except White which is fitted with a full Quick Dry micro mesh liner.)



BLW – BLACK/WHITE

WHT – WHITE/WHITE  
(FULL LINER)



SLT – SCARLET

FOR – FOREST

BLK – BLACK



ROY – ROYAL

WHT – WHITE  
(FULL LINER)

## #2020 YM – AXL

Made with Admiral's BPK moisture management high sheen polyester fabric. The Leeds is a long & full cut short, with two micromesh inserts for breath ability and style. Tonal embroidered logo gives this short a professional, yet understated look. Full length Quick Dry micro mesh liner.



ROW – ROYAL/WHITE

ROG – ROYAL/GOLD

NVW – NAVY/WHITE



## #2023 YM – AXL

The Napoli is made with Admiral's Airwick moisture management fabric. Quick dry mesh inserts, with contrast air channels further enhance the moisture management properties of this short. Covered waistband with inner tie cord. Unlined.



BLW – BLACK/WHITE

BLS – BLACK/SCARLET

WHB – WHITE/BLACK



ROW - ROYAL/WHITE

ROG - ROYAL/GOLD

BLW - BLACK/WHITE

## #2001 YM – AXL

Featuring Admiral's NEW Soft Polyester Knit fabric. Stylized inserts with mesh accents makes this short a perfect match for the Solano jersey. Covered waistband with inner tie cord. Unlined. The Terra short will meet all your performance and design expectations.



TERRA



BLW – BLACK/WHITE

SLW – SCARLET/WHITE

ROW – ROYAL/WHITE

## #2005 YS – AXL

The Pulse is a 100% BPK polyester short. This moisture management short is accentuated with contrast piping and quick dry mesh inserts. Covered waistband with inside tie cord. Unlined.



PULSE





BLW

BLS

FOW

GLR



NVW

ROG

SLW



WHR

WHN

WHB



ROW

MAW

WHT

### Ultra Sock

#3700 Child, Youth & Adult

The Ultra sock meets the highest professional standards. Featuring Coolmax®, this high performance sock also features a padded foot, ribbed articulated elastic ankle & arch support. Knitted mesh at lower back of calf and on the front ankle for added breathability. Reinforced heel and toe.

- BLS - BLACK/SCARLET
- BLW - BLACK/WHITE
- FOW - FOREST/WHITE
- GLR - GOLD/ROYAL
- MAW - MAROON/WHITE
- NVW - NAVY/WHITE
- ROG - ROYAL/GOLD
- ROW - ROYAL/WHITE
- SLW - SCARLET/WHITE
- WHB - WHITE/BLACK
- WHN - WHITE/NAVY
- WHR - WHITE/ROYAL
- WHT - WHITE/WHITE

## Premier Sock

#3500NL Child, Youth & Adult

Premier match quality sock with superior construction elements. Ribbed articulated elastic ankle & arch support. Reinforced toe and heel. 95% nylon and 5% spandex. Featured without Admiral logo.

- BLK - BLACK/BLACK
- BLS - BLACK/SCARLET
- BLW - BLACK/WHITE
- FOW - FOREST/WHITE
- GLD - GOLD/GOLD
- GLR - GOLD/ROYAL
- MAR - MAROON/MAROON
- NVW - NAVY/WHITE
- ORG - ORANGE/ORANGE
- PUR - PURPLE/PURPLE
- ROG - ROYAL/GOLD
- ROY - ROYAL/ROYAL
- ROW - ROYAL/WHITE
- SKY - SKY/SKY
- SLW - SCARLET/WHITE
- WHB - WHITE/BLACK
- WHF - WHITE/FOREST
- WHR - WHITE/ROYAL
- WHS - WHITE/SCARLET
- WHT - WHITE/WHITE

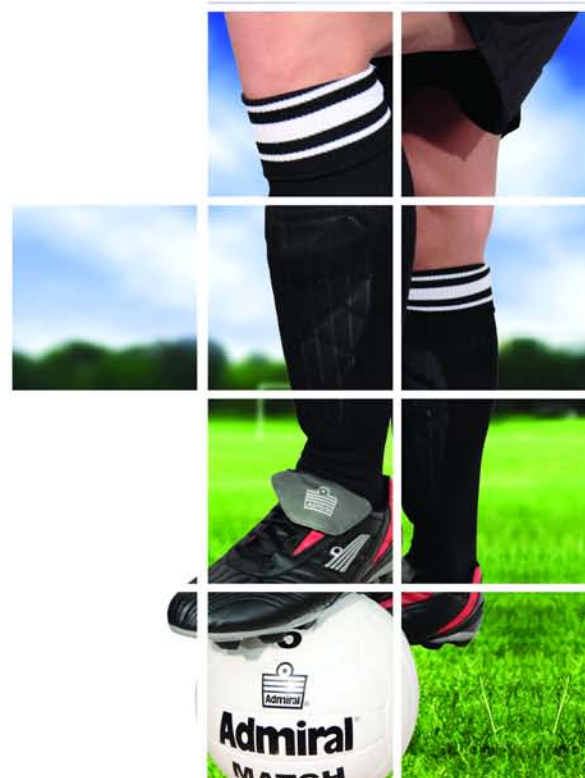


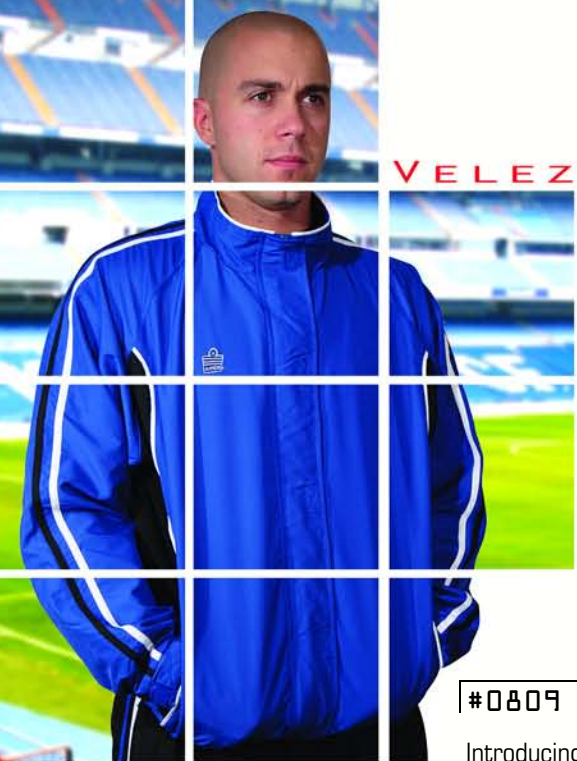
## Admiral Ankle Sock

#3550 Adult

Padded foot. Ribbed articulated arch support. Reinforced heel and toe.

WHN - WHITE NAVY





VELEZ  
VELEZ



MBW



FBW



ROW



RBW



SBW



BLW

#0809 YM - AXXL (incl. YXL)

Introducing Admiral's latest development in training suits. This piece has it all: Soft high density twill fabric. Wind & rain resistant. Full micro mesh liner. Open Hem. Dropped tail. Elasticized draw cord with slider. Zippered pockets. Storm flap. Velcro & elastic storm wrist closure. Mesh overlays. The pant is also fully lined. Zippered pockets and contrast overlay stripes. Tailoring system allows pant length to be adjusted up to 1 1/2 inches. Lower leg zipper opening with contrasting storm gusset.



NVW

BLW - BLACK/WHITE  
FBW - FOREST/BLACK/WHITE  
MBW - MAROON/BLACK/WHITE  
NVW - NAVY/WHITE  
ROW - ROYAL/WHITE  
RBW - ROYAL/BLACK/WHITE  
SBW - SCARLET/BLACK/WHITE



PRESTIGE  
JACKET



**Prestige Jacket**

#0810J YM - AXXL (incl. YXL)

This traditional knitted polyester jacket offers a classic design, combined with comfort and functionality. This jacket has a full front zipper and slash side pockets, accented by two color knit ribbed cuffs and waistband. Matched with Legend pant.

SBW - SCARLET/BLACK/WHITE  
BLW - BLACK/WHITE



**Legend Pant**

#0803P YM - AXXL  
(incl. YXL)

Knitted polyester pant with zippered side pockets.

BLK - BLACK





## #0802 YM – AXXL (incl. YXL)

The predecessor to the new Velez, this proven winner remains a favorite. Soft high density twill fabric. Wind & rain resistant. Full micro mesh liner. Open Hem. Elasticized draw cord with slider. Zippered pockets. Storm flap. Velcro & elastic storm wrist closure. Mesh overlays. Double beaded piping. Double needle contrast stitching for durability. The Pant is also fully lined. Zippered pockets and arched double beaded piping. Tailoring system allows pant length to be adjusted up to 1 1/2 inches. Lower leg zipper opening with contrasting storm gusset.

BLW – BLACK/WHITE  
BRW – BLACK/ROYAL/WHITE  
BSW – BLACK/ SCARLET /WHITE  
NVW – NAVY/WHITE  
ROW – ROYAL/WHITE

ATHENS

ATHENS



## Hurricane Pant #0805P YS – AXL (incl. YXL)

This waterproof 100% Nylon pant features mesh lining for comfort, two side seam zippered pockets, lower leg zippers with gusset and contrast stripes on both sides.

BLW – BLACK/WHITE  
NVW – NAVY/WHITE



## #0805J YS – AXL (incl. YXL)

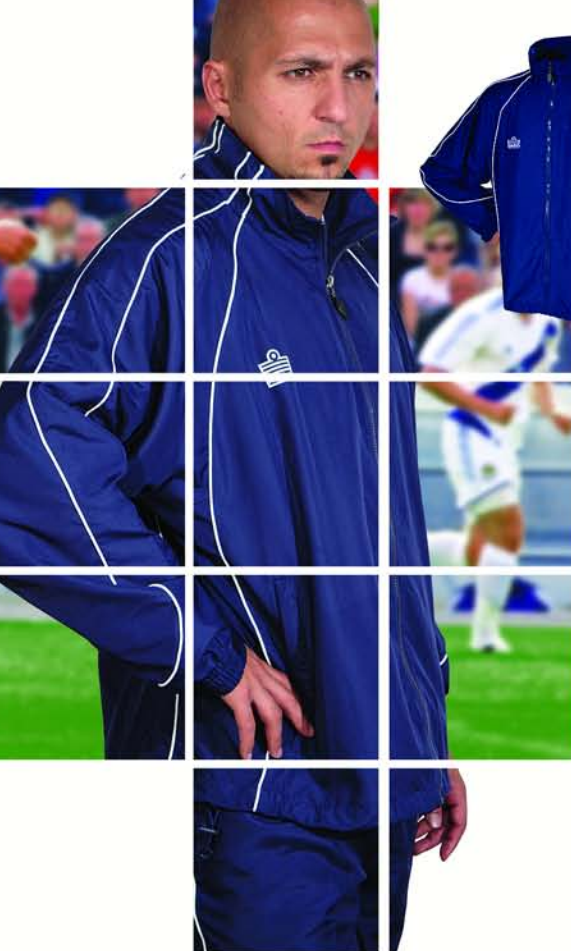
Water-repellent and windproof. The Typhoon will protect you from the elements. Seam sealed, mesh lined, hide away hood in collar, two front zippered pockets and a mesh opening on the back for breathability. A must have for the Elite player!

BSW – BLACK/SCARLET/WHITE  
BLW – BLACK/WHITE  
BRW – BLACK/ROYAL/WHITE  
NVW – NAVY/WHITE



TYPHOON





NVW



BSW



BRW



BLW

AVALON

### Jacket #0804J YM — AXXL (incl. YXL)

100% high count coated micro polyester jacket. Water and wind resistant. Micro mesh lined. Two exterior zippered pockets. Interior embroidery opening. Dropped tail. 3mm Piping.

BSW — BLACK/SCARLET/WHITE

BRW — BLACK/ROYAL/WHITE

BLW — BLACK/WHITE

NVW — NAVY/WHITE

### Pant #0804P YM — AXXL (incl. YXL)

100% high count coated micro polyester. Water and wind resistant. Micro mesh lined. Nylon taffeta lower leg. Zippered pockets. Tailoring system allows pant length to be adjusted up to 1 1/2 inches. Elasticized waist & draw cord. Lower leg zipper opening with storm gusset.

BLW — BLACK/WHITE

NVW — NAVY/WHITE



AVALON



TEKNO

TEKNO

### Pant #0800P YM — AXXL (incl. YXL)

100% coated nylon shell pant. Wind & water resistant. Side seam pockets.

BLW — BLACK/WHITE

NVW — NAVY/WHITE



### Jacket #0800J YM — AXXL (incl. YXL)

100% coated nylon full zip shell jacket. Wind & water resistant. Open hem with drawcord. Two front slash pockets.

NVW — NAVY/WHITE

BLW — BLACK/WHITE

ROW — ROYAL/WHITE



BSW



BLW



ROW



#6120 YM - XXXXL (incl. YXL)

100% coated nylon. Water and wind resistant.  
Double layer 2 by 2 ribbed crew neck, cuff and waist.  
Side seam pockets.

NVW - NAVY/WHITE

BLW - BLACK/WHITE

BENCH

BENCH

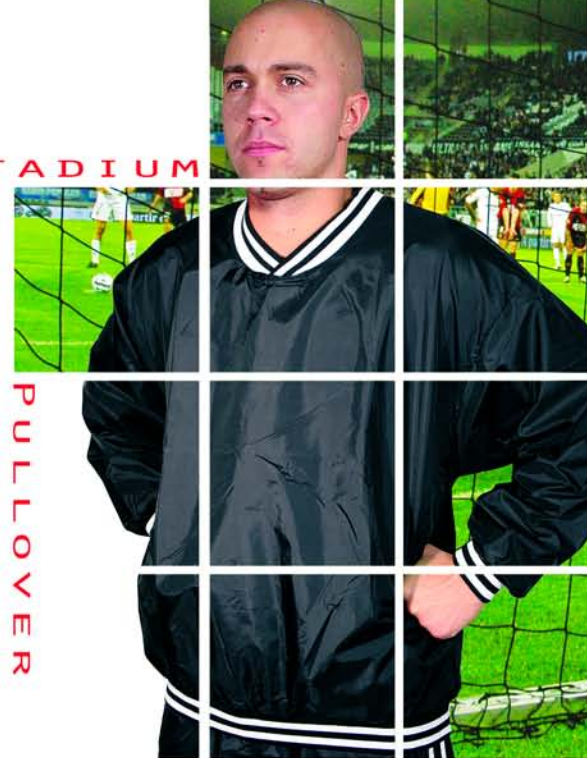
#0840 AXS - AXL

The ideal bench coat! This 3 in 1 jacket offers everything you could possibly ask for. Outer shell is a seam sealed 100% nylon. Offering underarm zipper vents, hideaway hood, elasticized storm cuff with Velcro closure and plenty of zippered pockets allow this jacket to be worn on its own or together with the fleece lined, coated nylon inner shell. The inner shell has three zippered pockets, which enables it to be worn on its own or together with the outer shell. This jacket works for all seasons!



STADIUM

PULLOVER



17

REVOLUTION

#0839  
AXS - AXL

This coated 100% oxford nylon jacket is seam sealed and fleece lined to keep you completely dry and very warm on cold and rainy days. The Revolution features a storm flap with snap closure. Lined hood. Inner chest pocket. Covered zipper pockets. Elasticized Velcro wrist storm closure.

BLK - BLACK





HOODIE

#0806 YL - AXL

100% Soft PK moisture management. The Hoodie is a full zip, hooded training piece which offers an open hem bottom, draw cord with toggle, contrast piping and micro mesh inserts add style and functionality.



BLW

WSB

HOODIE

BLW - BLACK/WHITE  
RBW - ROYAL/BLACK/WHITE  
WSB - WHITE/SCARLET/BLACK



BACK

RBW

#0808 YL - AXL

Designed for comfort, this Pullover offers all the features an elite piece should. Soft PK moisture management, contrast mesh insets and an ergonomic cut. Embroidered Logo.

BRW - BLACK/ROYAL/WHITE  
BSW - BLACK/SCARLET/WHITE  
FBW - FOREST/BLACK/WHITE  
SVB - SILVER/BLACK  
SBW - SCARLET/BLACK/WHITE



BSW



FBW

SBW

SVB

BRW



STADIO  
STADIO

SOLO

#1406 YL - AXL

100% Soft PK fabric. Contrast self collar, contrast micro mesh inserts offer this piece a look you will not find on others.

BLS - BLACK/SCARLET  
FOB - FOREST/BLACK  
ROB - ROYAL/BLACK  
WHB - WHITE/BLACK



FOB

ROB



WHB

BLS



SOLO



BLR

BLW

BLS

## #6122 YL - AXL

100% brushed polyester fabric. Elasticized v-neck. Open hem bottom. Contrast self fabric inserts for style.

BLR - BLACK/ROYAL

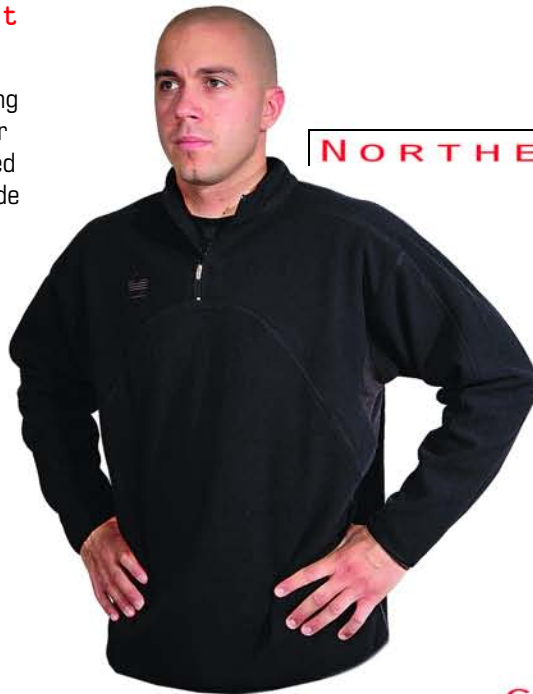
BLW - BLACK/WHITE

BLS - BLACK/SCARLET

## Euro Training Pant

### # 0836 YL - AXL

Produced to be the ideal training pant. Tapered leg with 9" zipper on both calves with embroidered Admiral logo's for style. Two side slash pockets make this pant a choice piece on cool days. 100% Soft PK Polyester.



NORTHERN

## #6000 YL - AXL

100% Polyester micro polar fleece. Micro mesh inserts under the arms for breathability. The traditional front 1/2 zip makes this piece ideal for training on those cold days. Elastic waist and cuffs.

BSV - BLACK/SILVER

19

## #6104 YL - AXL

This pullover is manufactured using Admiral's 100% soft PK polyester. Tonal micro mesh inserts for air flow, make this piece a favorite for players on and off the field.

NAVY - NAVY

MAR - MAROON

BLK - BLACK



NAVY

MAR

BLK

CONTINENTAL

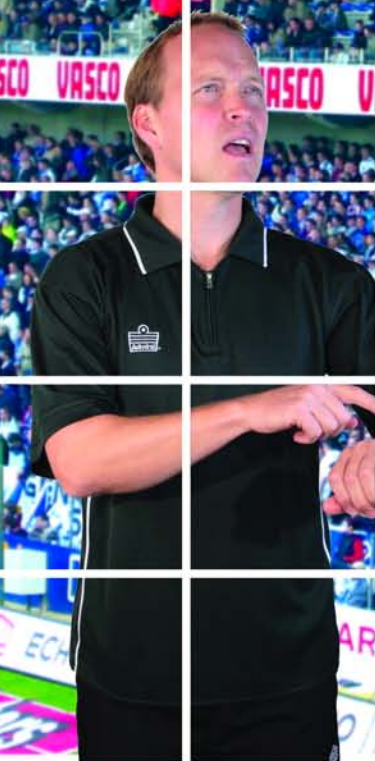
CONTINENTAL



LIGHT WEIGHT

TRAINING TOP

POLAR FLEECE



TOUCHLINE



TOUCHLINE



#6100 YL — AXXL

A unique and classy look make the Touchline Polo a favourite for team members and supporters. The raglan style polo is constructed with our moisture management Air Wick fabric. Front zipper with a tonal self backing. Micro mesh inserts under the arms allow air flow to cool body. Tailored collar. Contrast Piping.

BLW — BLACK/WHITE    FOW — FOREST/WHITE    NVW — NAVY/WHITE  
ROW — ROYAL/WHITE    SLW — SCARLET/WHITE    WHB — WHITE/BLACK



Tactic Short #2496 YL — AXL

This short was built for on field training or off field casual wear. Knit short with anatomically placed mesh for breathability. Elasticized waist band, inner drawcord. 100% polyester.

BLK — BLACK



ZURICH POLO



#6101 AS — AXXL

The Zurich is designed to be worn on and off of the sideline. The raglan style polo is constructed with our performance 100% cotton fabric. Two button front placket. Drop-Tail design. Tailored collar.

BLK — BLACK  
NVY — NAVY  
ROY — ROYAL  
SLT — SCARLET  
WHT — WHITE





ROY



WHT



BLK

## PT JERESY

#6102 YL - AXL

100% moisture management polyester.  
Tapered cut. Form fitting.  
Open tapered sleeves.  
3mm tipped V neck.

ROY - ROYAL  
WHT - WHITE  
BLK - BLACK



PT JERESY



## CORPORATE T-SHIRT



#0704 YS - AXL

100% Heavy Weight Cotton T-Shirt.

WHT - WHITE      GREY - ATH GREY



## LARNICA

#1402 YL - AXL

The Larnica is a comfortable top made with Admiral's 100% Airwick Polyester. This is a moisture management piece, with contrast inserts for added style.



WHB - WHITE/BLACK

BSV - BLACK/SILVER

NSV - NAVY/SILVER



LARNICA





### Long Sleeve Shirt #1403-LS YL - AXL

High density 82/18 Nylon/Lycra fabric. Moisture management technology reduces body temperature & increases comfort by drawing perspiration away from the body.



BLK - BLACK WHT - WHITE

### Short Sleeve Shirt

#1403 YL - AXL

High density 82/18 Nylon/Lycra fabric. Moisture management technology reduces body temperature & increases comfort by drawing perspiration away from the body.

BLK - BLACK  
WHT - WHITE



### COMPRESSION

SHORT

### #2497 YL - AXL

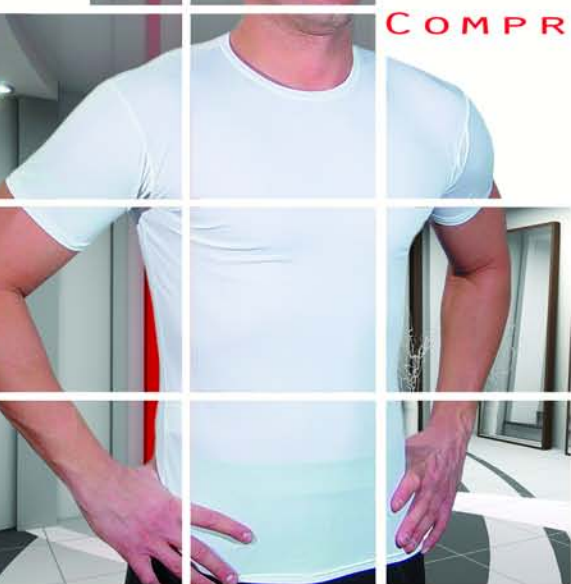
High density 82/18 Nylon/Lycra fabric. Wide comfortable covered waistband. Reinforced seams. Designed to provide comfort, support & protection from field abrasions.



BLK - BLACK



WHT - WHITE





**Premier Ref Sock**  
**#3500NL Child, Youth, Adult**

Premier quality sock. Ribbed articulated elastic ankle & arch support. Reinforced toe and heel. 95% nylon and 5% spandex. Durable. Featured without Admiral logo.

BLW – BLACK/WHITE



**OFFICIAL REF**

**#1502 YL – AXL (incl. YXL)**

100% PK moisture management polyester. Sculpted self fabric cross over V-neck. 2 part Velcro patch for association badges. One breast pocket. Tonal V neck & Collar.

BLK – BLACK/BLACK



**Carder Ref Short**  
**#2501 YL – AXL**

BLK - BLACK

Pleated pant. Side seam & back pockets with velcro closure. Micro mesh inserts on back for air flow.



**DERBY**



DERBY REF

**#1501 YL – AXL**

Moisture management SPK fabric. 2 part Velcro patch for association badges. Tonal micromesh inserts for breathability and style.

BLK – BLACK/BLACK

GLB – GOLD/BLACK

SLB – SCARLET/BLACK





BAYERN  
BAYERN

## #1807 YM – AXL

BLG – BLACK/GOLD

Moisture management SPK  
Drop Needle polyester fabric.  
Cut piece design. Sculpted  
padded elbows. Contrast micro  
mesh insert under the arms and below  
neckline.



## Seville GK Pant

#2591 YM – AXL



100% heavyweight polyester flat pique fabric.  
Quilted padded hips and knees. Large waistband.  
Contrast Silver piping. Stirrups.

BSV– BLACK/SILVER

## Baha GK Short

#2583 YM – AXL



An updated Admiral  
GK Short. 100%  
heavyweight polyester  
flat pique fabric.  
Durable. Full cut.  
Quilted padded hips.  
Large waistband  
and contrast piping.

BSV – BLACK/SILVER

## GK Padded Compression Short

#2582 YL – AXL



High density  
82/18  
Nylon/Lycra  
fabric. Wide  
comfortable  
covered  
waistband.  
Reinforced  
seams.

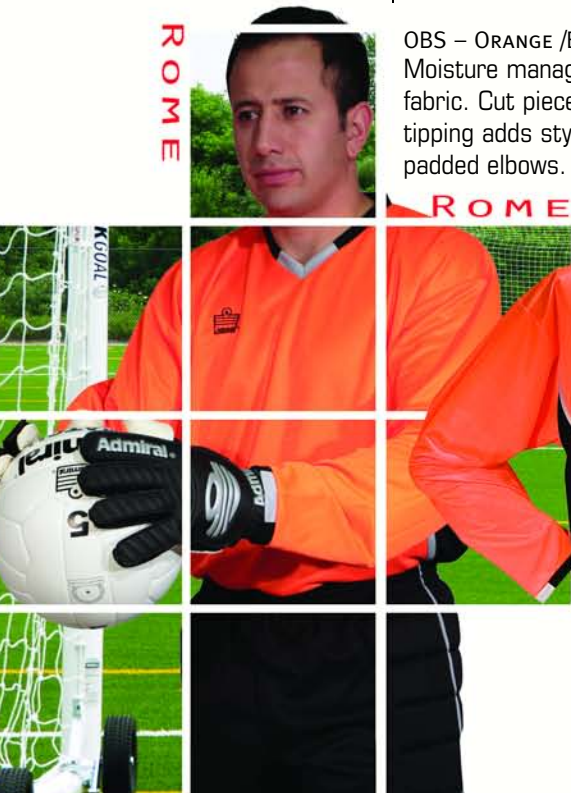
Removable  
perforated pads.  
Designed to protect keepers from field abrasions.

## #1805 YM – AXL

OBS – ORANGE /BLACK/SILVER

Moisture management BPK high sheen polyester  
fabric. Cut piece design. Contrast micro mesh  
tipping adds style to the neckline. Sculpted  
padded elbows. Contrast piping.

ROME



## BANKS

BANKS

## #1806 YS – AXL

LMB – LIME/BLACK

The Banks is a durable light weight polyester  
GK jersey. Contrasting overlock seams.  
Padded elbows. Soft double layer Yuko trim  
and cuffs.





### PRO SAVE #0509

The Professionals choice. Fully redesigned for better comfort and performance. 5mm+3mm Super Soft latex for superior grip of the ball. Rolled thumb for increased surface contact. Constructed with a lightweight Poly/cotton mesh backhand for increased breathability and added flexibility. New removable Admiral "Pro Sticks" designed to give ultimate protection against hyperextension but flexible enough to provide smooth movement of the hand. Soft rubberized transparent windows on middle two fingers add performance and allow viewing of braces. Bandage wrist to stabilize the fit with full-wrap Velcro strap.

SIZES: 6,7,8,9,10,11 COLOURS: WHITE/RED/BLACK



### PROTECTOR II #0506

From the Pro Grip and Protector of 2005 comes the new Protector II. 4mm+3mm Super Soft latex provides a top professional performance palm. Split latex backhand and thumb with mesh and inverse stitching gives flexibility, breathability and protection. Latex finger inserts offer added surface contact. Bandage wrist to stabilize the fit with full-wrap Velcro strap.. Packaged in a reusable glove bag.

SIZES 6,7,8,9,10,11 COLOURS: SKY BLUE/WHITE



### MUNICH #0507-117

The popular Munich returns with a dominating new look. 4mm+3mm Soft latex with full length wide cut construction for superior contact of the ball. Rolled thumb for increased surface contact. Embossed PU backhand. V Notch entry for easy access. Ideal match glove. Package in reusable glove bag.

SIZES: 5,6,7,8,9,10,11 COLOUR: BLACK/SILVER



### TEAM GRIP #0501

New for 2007, the Team Grip offers breathable side mesh insrts, with embossed PU backhand. Full synthetic latex palm. V-notch entry with Velcro closure.

SIZES: 4,5,6,7,8,9 COLOUR: ROYAL/BLACK



### Field Player #0513

Designed to protect field players from bitter conditions. 85/15 stretch polyester/cotton fabric. Breathable. Rubber finger inserts provide grip for throw-ins.

SIZES: 6,7,8,9,10 COLOUR: BLACK

GK GLOVES



GK GLOVES





#### #4002 ATTACK FLIGHT

SIZES 3, 4 & 5

The Attack Flight is a training ball constructed from a 1.1mm PVC cover. 4 ply PV lamination and butyl bladder. Customization available.

#### #4004 AERIAL ATTACK

SIZES 3, 4, & 5

PWRB – PEARL WHITE/ROYAL/BLACK

Entry priced ball featuring a 4 fold 1.0 mm PU casing!. Equipped with a butyl bladder, the Aerial Attack is the ideal club or team practice ball.



#### #4003 GENESIS

SIZES 3, 4, & 5

WHB – WHITE/BLACK

WHR – WHITE/ROYAL

Like its design, this ball is engineered to last. Featuring high density 1.4 mm PU/PVC carbonium lamination casing and a butyl bladder.



#### #4075 Pro Flight

SIZES 4 & 5

Competitive Match Ball with proven quality. Soft and lively. 1.5mm PU 4 fold casing. Latex bladder. Superior ball.



#### #4080 Match 1&5 Ball

Size 4 & 5

Superior Match ball. 1.6mm Microfibre PU cover. 4 Ply PV Lamination. High quality Super Latex bladder. FIFA Inspected.



#### #4006 Premier Flight

Sizes 4 & 5

Professional Match Ball Standard quality. A 1.5 mm PU Microfibre casing proves itself amongst the game's elite. Equipped with a PK latex bladder for optimal performance, the Premier Flight will meet all your match ball requirements.



#### #4005 Aerial Pro

Sizes 4 & 5

New for 2007. Distinct in its surface finish; the Aerial Pro combines the proven qualities of the Pro Flight with added performance of Admiral's Air Mattress System. Superior touch and control are the key features of this 1.5mm PU 4 fold casing with latex bladder offering.



#### #4007 Aerial Premier

Sizes 4 & 5

Admiral's newest elite introduction. Features a 1.5 mm PU Microfibre casing, which is further enhanced by Admiral's Air Mattress System and a superior PK Latex bladder. The Aerial Premier will take your game to new heights!



#### #4077 Mini Xtreme

Size 2

Skills ball. 32 panel PVC lamination.





SHIN GUARDS

SHIN GUARDS



#### #0904 Odyssey

SIZES SR (9.25 IN), JR. (7.25 IN)

PE Shell with 5mm EVA padding.  
Mesh Coolmax® lined backing.  
Covered fabric ankle bandage  
with 4mm EPE insert.



#### #0907 Eclipse

SIZES XS (4.5 IN), S (5.5 IN),  
M (6.5 IN), L (7.5IN)

Transparent K resin shell. 5mm  
EVA lined backing. Velcro calf  
strap. Covered fabric ankle  
bandage with 4mm EPE insert.



#### #0907 - 210 SHINPRO

XXS, XS, S, M, L, XL

The Shinpro features flexible  
inserts. Porous EVA backing.  
Elasticized stirrup. Security calf  
strap and padded ankle.



#### #0926 Solo

SIZES S, L

Moulded EVA backing  
for Shock absorption.  
PE outer shell. Elasticized  
Velcro straps hold the  
guard in place.



RBW



SBW



ROW



BLW



NVW

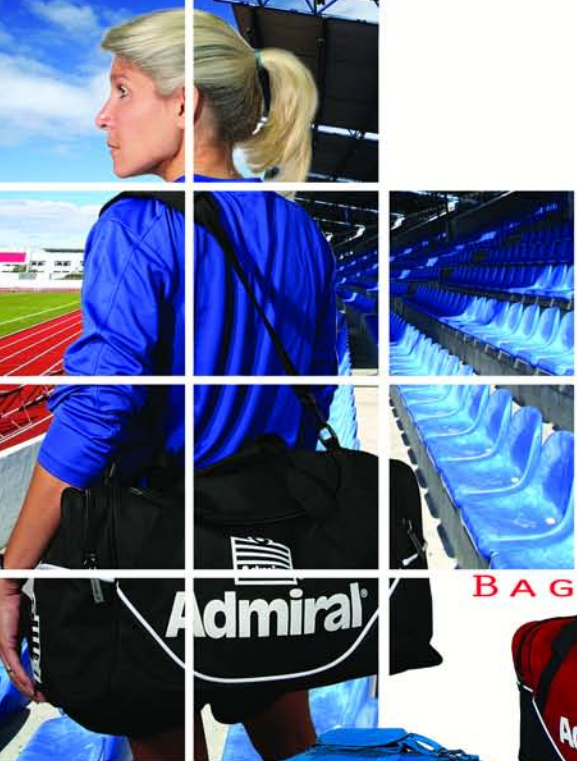
FIELD BACK PACK



### Field Back Pack #0909 18" x 17" x 9"

600 D Polyester. Two side pockets with mesh panels. Front ball pocket with mesh panels. Adjustable, padded shoulder straps. Large main compartment with U shaped opening. #10 industrial zippers on main compartment and #8 industrial zippers on side.

ROW – ROYAL/WHITE  
RBW – ROYAL/BLACK/WHITE  
SBW – SCARLET/BLACK/WHITE  
BLW – BLACK/WHITE  
NVW – NAVY/WHITE



OLYMPICO  
BAG



**Olympico Bag #0902 24" x 12" x 12"**

The Olympico bag is made of 600D Polyester. Two separate side pockets, one of which is a ventilated wet/dry compartment, allow for storage of footwear, a ball or wet clothing. #10 industrial zippers on main compartment. #8 light industrial zippers on the sides. Removable padded shoulder strap. Velcro handle wrap. Contrast piping.

ROW – ROYAL/WHITE  
BSW – BLACK/RED/WHITE

ROG – ROYAL/GOLD  
BLW – BLACK/WHITE

BFW – BLACK/FOREST/WHITE  
NVW – NAVY/WHITE

BRW – BLACK/ROYAL/WHITE  
MBW – MAROON/BLACK/WHITE

**Olympico Bag - Small**  
**#0902-SM 20" x 11" x 11"**

The Olympico -Small is a smaller version of the original. It is made of the same 600D Polyester. Two separate side pockets, one of which is a ventilated wet/dry compartment, allow for storage of footwear, a ball or wet clothing. This back is great as a coaches kit bag, or simply as a small alternative.

BLW – BLACK/WHITE



**Olympico Bag - Large**  
**#0902-LG 30" x 13.5" x 13.5"**

The Olympico -Large is a larger version of the original with a 5 inch longer central compartment and larger in height and width. It is made 600D Polyester with two separate side pockets, one of which is a ventilated wet/dry compartment, allowing for storage of footwear, a ball or wet clothing. This back is great for the serious player who needs extra storage.

BLW – BLACK/WHITE





#### #0900 Shoe Bag

14" x 4.5" x 5.25"

420D NYLON. ZIPPERED CHANGE POCKET & REINFORCED HANDLE.

BLK – BLACK



#### #0920 Team Megaholdall

32" x 14" x 15"

DESIGNED FOR ALL OF YOUR TEAM'S LARGER ITEMS INCLUDING UNIFORMS, BALLS, TRAINING EQUIPMENT, WATER BOTTLES, AND GOAL NETS.



#### #0923 Deluxe Footwear/Accessory Bag

14" x 9" x 5"

600D POLYESTER. DOUBLE ZIPPER PULL. VELCRO CLOSURE. WEB HANDLE & SHOULDER STRAP.



#### #0922 Sideline Shoulder Bag

18" x 13" x 6"

THE SIDELINE SHOULDER BAG IS PERFECT FOR COACHES AND MANAGERS. 600D POLYESTER, TONAL ADMIRAL LOGO ON FRONT FLAP.

BLK – BLACK



#### #0924 Drawstring Shoulder Bag

19" x 15.5"

420D NYLON. GROMMETS. ADJUSTABLE SHOULDER BRAID. PRINTED LOGO.

SLT – SCARLET

ROY – ROYAL

BLK – BLACK

NAVY – NAVY