

Admiral[®] 2009



S
O
C
C
E
R



Admiral®

INDEX

Jerseys	>> 3
Shorts	>> 14
Team Program	>> 17
Embellishment	>> 20
Socks	>> 22
Outer Wear	>> 24
Training Wear	>> 28
Ref Gear	>> 33
GK Gear	>> 34
Balls	>> 36
Bags	>> 38
Accessories	>> 41

Admiral Icon Descriptions:



Vapor Draw - Admiral's Vapor Draw technology brings moisture from the skin to the materials outer surface where it quickly evaporates leaving you cool and dry.



Canada Only - Items indicated with this icon are available in Canadian market only.



TP Icon - Admiral's newest concept is the "Team Program". Targeted to individual teams, the "Team Program" allows Admiral to offer a wider selection of top quality styles to ensure your individual kit requirements are met. See page 17 for further details of this program.



Coolmax wicks away moisture and keeps your feet dry and cool. The sock choice of Professional Athletes.



City



GLN



ORW



ROW

10

10



FOW



SLW



GLR



WHB



ROG



NVG



MAW

#1043 YM - AXL

New for 2009. A sharp cut piece 2 color offering suitable for all clubs. Features Admiral's Soft Knit polyester Vapor Draw fabric with drop needle construction, V-neck with contrasting tipping and quick dry mesh inserts for added ventilation. Drop tail with covered contrasting binding.

FOW Forest/White
GLN Gold/Navy
GLR Gold/Royal
MAW Maroon/White
NVG Navy/Gold

SLW Scarlet/White
ROW Royal/White
WHB White/Black
ORW Orange/White
ROG Royal/Gold





Dynamo



SBW



WMB



WHT



WFB



GBW

DYNAMO

#1041

YM – AXL

DYNAMO - WOMEN'S

#1032

WXS – WXL

The Dynamo offers a dramatic, global feel and look. Available in a wide range of color options, the Dynamo features Admiral's Soft Knit polyester Vapor Draw fabric with drop needle construction which provides a unique surface texture, sculpted self v-neck and quick dry mesh inserts.

Admiral has engineered the Dynamo-Women's using the same fabrication and features in the Men's Dynamo. The special cut throughout the body, shoulders, arm holes and hem are better suited for active women.

FBW	Forest/Black/White
GBW	Gold/Black/White
GRW	Gold/Royal/White
MBW	Maroon/Black/White
NVW	Navy/White
ORW	Orange/White
RBW	Royal/Black/White
RGW	Royal/Gold/White
SBW	Scarlet/Black/White
WHT	White/White
WMB	White/Maroon/Black
WFB	White/Forest/Black
WRB	White/Royal/Black
WSB	White/Scarlet/Black



RBW



ORW



MBW



GRW



RGW



FBW



NVW



WSB



WRB

Admiral®

Women's Fit



Admiral's Women's cut Dynamo Jersey and Genoa Short.

Specifically engineered for women who play the game. The women's cut Dynamo jersey offers a narrower shoulder, shorter sleeve and armhole, tapered waist, and slightly flared hem. The Genoa short has a narrower waist and shorter rise. — see page 15

Perfect for active women.

Also available in Women's Cut: Essex Short (see page 14)



www.admiralsoccer.com

Admiral



Coventry



BLW



ROG



SLW



EMW



GLR



MAW



FOW



NVW



ROW



WHT

#1040 YM – AXL

The classic simple styling of the Coventry features Admiral's 100% bright polyester fabric with Vapor Draw technology, rounded Lycra neck opening, set-in piping, Quick Dry mesh inserts and drop tail with contrast binding.

BLW	Black/White
EMW	Emerald/White
FOW	Forest/White
GLR	Gold/Royal
MAW	Maroon/White
NVW	Navy/White
ROG	Royal/Gold
ROW	Royal/White
SLW	Scarlet/White
WHT	White/White





WHR



RBW

GRW

Chelsea



SBW



WHB



ROW



- GRW** Gold/Royal/White
- RBW** Royal/Black/White
- ROW** Royal/White
- SBW** Scarlet/Black/White
- WHB** White/Black
- WHR** White/Royal

#1042 YM - AXL

Directly from London's High Street, the Chelsea is all class. The Chelsea is manufactured using Admiral's pinstripe sublimated moisture management bright PK Vapor Draw fabric. Other features include the open v-neck and Quick Dry mesh inserts that enhance design and performance. A fresh take on the traditional vertical stripe design!



BLW



RBW



GRW



EWB



ROW

- BLW** Black/White
- EWB** Emerald/White/Black
- GRW** Gold/Royal/White
- RBW** Royal/Black/White
- ROW** Royal/White
- SBW** Scarlet/Black/White



Palace

#1029 YM - AXL

Sublimated Vapor Draw PK high sheen polyester fabric with integrated cut and piping design detailing. Target engineered into back for ease of printing. Self fabric low profile neck. Drop tail with covered binding.



SBW



Bolton



NSW



RBW



SBW



SVBW



SKBW



BSW



EBW



FBW



GBW



VGBW



MBW



OBW



PIBW



PBW



WBS



LBW



TBW

#1012 YS - AXL

New for 2009. Constructed with Admiral's new polyester interlock Vapor Draw fabric. Technical cut piece design. Quick Dry mesh inserts for added ventilation. Sculpted self fabric $\frac{3}{4}$ crew neck with tonal insert.

BSW	Black/Scarlet/White
EBW	Emerald/Black/White
FBW	Forest/Black/White
GBW	Gold/Black/White
LBW	Lime/Black/White
MBW	Maroon/Black/White
NSW	Navy/Scarlet/White
OBW	Orange/Black/White
PBW	Purple/Black/White
PIBW	Pink/Black/White
RBW	Royal/Black/White
SKBW	Sky/Black/White
SBW	Scarlet/Black/White
SVBW	Silver/Black/White
TBW	Teal/Black/White
WBS	White/Black/Scarlet
VGBW	Vegas Gold/Black/White



Available USA June 1, 2009

House League

The Bolton is Admiral's

latest offering for

recreational clubs.

The Bolton Package

consists of the

Bolton jersey, Azteca

short and Premier sock.

The package is designed

for competitive teams but

sold at recreational price

to qualifying clubs.



Admiral uses the most advanced moisture management fabrics with quick dry mesh inserts which work to keep your players cool and dry.

Admiral also offer the United (see page 10), Lazio (page 11) and Victory jerseys (page 12) as alternatives should your club require different styles and/or choices.

Our recreational packages can be embellished with club logos, numbers and sponsors should you wish. They are delivered by team in separate poly bags that are appropriately labeled. All that is required is to simply hand them out. We remove all of the additional administrative requirements to allow the club the freedom of ensuring that their coaches and kids simply have fun!

Admiral®

www.admiral-soccer.com



United



RBW

#1010 YS - AXL

The United features Admiral's 100% polyester bright PK Vapor Draw fabric, Quick Dry mesh inserts, 5mm elastic neck binding provides a comfortable fit, set-in piping and drop tail with covered binding completes this superior look.

- EBW** Emerald/Black/White
- FBW** Forest/Black/White
- BSW** Black/Scarlet/White
- GBW** Gold/Black/White
- LBW** Lime/Black/White
- MBW** Maroon/Black/White
- NSW** Navy/Scarlet/White
- OBW** Orange/Black/White
- PBW** Purple/Black/White
- PIBW** Pink/Black/White
- RBW** Royal/Black/White
- SKBW** Sky/Black/White
- SBW** Scarlet/Black/White
- SVBW** Silver/Black/White
- TBW** Teal/Black/White
- WBS** White/Black/Scarlet



WBS



GBW



TBW



MBW



NSW



SKBW



BSW



LBW



SVBW



PIBW



EBW



OBW



SBW



PBW



FBW



Lazio

Admiral

#1009 YS – AXL

The Lazio is manufactured in Admiral's 100% Polyester BPK Moisture management fabric. 5 mm elastic neck binding provides a comfortable fit. Quick Dry mesh inserts provide further performance comfort. Other features include, contrast overlay stripes, drop tail with covered binding.



SBW

WBS

- EBW** Emerald/Black/White
- FBW** Forest/Black/White
- GBW** Gold/Black/White
- LBW** Lime/Black/White
- NSW** Navy/Scarlet/White
- OBW** Orange/Black/White
- PIBW** Pink/Black/White
- PBW** Purple/Black/White
- RBW** Royal/Black/White
- SKBW** Sky/Black/White
- SBW** Scarlet/Black/White
- TBW** Teal/Black/White
- VGBW** Vegas Gold/Black/White
- WBS** White/Black/Scarlet



LBW



OBW



FBW



SKBW



EBW



PIBW



TBW



PBW



NSW



GBW



VGBW



RBW

VAPORDRAW
Admiral



Victory



SBW



EBW

FBW



OBW



PBW



NSW



WBS



LBW



GBW



TBW



RBW



BSW



MBW



SKBW



SVBW

#1008 YS - AXL

The Victory is manufactured in Admiral's 100% Polyester BPK Moisture management fabric. Offering a sculpted quick dry mesh collar. Quick dry mesh inserts surround the players body to keep the body cool, accentuated by contrast 5mm BPK piping. Dropped tail.

BSW	Black/Scarlet/White	PBW	Purple/Black/White
EBW	Emerald/Black/White	RBW	Royal/Black/White
FBW	Forest/Black/White	SKBW	Sky/Black/White
GBW	Gold/Black/White	SBW	Scarlet/Black/White
LBW	Lime/Black/White	SVBW	Silver/Black/White
MBW	Maroon/Black/White	TBW	Teal/Black/White
NSW	Navy/Scarlet/White	WBS	White/Black/Scarlet
OBW	Orange/Black/White		



Santos



SLW



WHB



GLB



#1044 AS - AXL

A classical style. Produced using Admiral's Air Wick fabric with Vapor Draw. Self fabric V-neck with contrasting set in piping across the chest.



ROW



BLW



FOW

- ROW** Royal/White
- SLW** Scarlet/White
- GLB** Gold/Black
- FOW** Forest/White
- WHB** White/Black
- BLW** Black/White



Solo Long Sleeve

#1406 YL- AXL

100% Soft PK fabric. Contrast self collar, contrast micro mesh inserts offer this piece a look you will not find on others.



BLW



WHB

- BLW** Black/White
- NVW** Navy/White
- ROW** Royal/White
- SLW** Scarlet/White
- WHB** White/Black

NVW



SLW



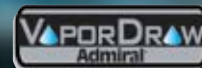
ROW





Essex

Admiral has also engineered this specially cut Essex Short for Women



ROG



BLW



FOW



ROW



NVG

Men's #2008 YM- AXL

Women's

#2009 WXS-WXL

A new cut for Admiral in 2009. The Men's version of this short features a longer, European style with Vapor draw fabric., Quick Dry mesh inserts on both sides, set in contrasting panels, long 7 inch inseams and 19 1/2 inch outseams. Unlined except for the white color. Women's cut version is standard Women's cut length and fit.



MAW



BLS



SLW



WHB

BLW Black/White
FOW Forest/White

BLS Black/Scarlet
NVG Navy/Gold

ROG Royal/Gold
SLW Scarlet/White
MAW Maroon/White

ROW Royal/White
WHB White/Black (Full Liner)

Devon

#2007 YM- AXL



BLW

A new cut for Admiral in 2009. This Long European style features Vapor draw fabric, notched vents on side of short for comfort, contrasting tipping around waistband, contrasting binding around bottom of leg, long 7 inch inseams and 19 1/2 inch out seams. Unlined except for white color. Built for speed.

BLW Black/White
ROW Royal/White
WHB White/Black (Full Liner)



ROW



WHB

Genoa

Admiral has also engineered this specially cut Genoa short for women

Admiral



BLW Black/White
FOW Forest/White
ROW Royal/White
BLS Black/Scarlet
NVW Navy/White
WHT White/White (Full liner)

ROG Royal/Gold (Not available in Women's)

GENOA SHORT #2003 YM - AXL

GENOA SHORT WOMEN'S #2006 WXS-WXL

The Genoa is manufactured using Admiral's 100% soft polyester Vapor Draw fabric, set in Quick Dry mesh inserts that wrap from the front to the back for superior styling. Elasticized waistband with self colored inside draw cord. Unlined except for White color.



Leeds



#2020 YM - AXL

A solid colored short. 100% polyester bright PK Vapor Draw fabric. The Leeds is a full cut short, with two micromesh inserts for breathability and style. Tonal embroidered logo gives this short a professional, yet understated look. Features a full length Quick Dry micro mesh liner.

SLT

BLK Black
FOR Forest
ROY Royal
SLT Scarlet
WHT White





Azteca Short



ROW



BLW



SLW



NVW

#2002 YS - AXL

The Azteca's classic design is timeless. 100% bright PK Vapor Draw fabric, self colored Quick Dry horizontal mesh inserts, speed vent and contrasting set-in piping. Covered waistband with inner tie cord. Unlined.

BLW	Black/White	NVW	Navy/White	ROW	Royal/White
FOW	Forest/White	ROG	Royal/Gold	SLW	Scarlet/White



ROG



FOW

Pulse

#2005 YS - AXL

The Pulse is a 100% bright PK Vapor Draw polyester short. This moisture management short is accentuated with contrast piping and quick dry mesh inserts. Covered waistband with inside tie cord. Unlined except for white color.

BLW	Black/White	NVW	Navy/White	ROW	Royal/White	SLW	Scarlet/White	WHT	White (Full Liner)
------------	-------------	------------	------------	------------	-------------	------------	---------------	------------	--------------------



SLW



BLW



ROW



WHT



NVW



Admiral's 2009 Team Program

Admiral's Team Program is a great way to find very well priced high quality team sets



ROW



FOW



ORW



NVW



BLW



MAW



SLW



WHT



ROG

TEAM: "TP" items are designated primarily for individual Teams as opposed to entire Clubs. Individual "TP" styles will be available in limited quantities as available on a 1st come 1st served basis. Admiral will not replenish this inventory the following year.

QUALITY: "TP" products are all high quality Admiral uniforms featuring all of the design details and features that our customers have come to expect from Admiral.

#1031 YM - AXL

The Solano features Admiral's Soft Knit polyester fabric with drop needle construction which provides a unique surface texture. This Vapor Draw jersey is further enhanced with quick dry mesh inserts for both design and performance. A truly professional look.

BLW	Black/White
FOW	Forest/White
MAW	Maroon/White
NVW	Navy/White
ORW	Orange/White
ROG	Royal/Gold
ROW	Royal/White
SLW	Scarlet/White
WHT	White/White

Solano

Admiral

Peru

#1023 YM-AXL

Manufactured with Admiral's 100% polyester Airwick Vapor Draw fabric. Features include contrasting self fabric inserts, contrast binding, sculpted neck line with contrast micro mesh inset.

RBW Royal/Black/White





Azuro



NVW



ROW

MAW

GOLD

#1020 YS-AXL

Simple. Stylish. 100% bright PK Vapor Draw Polyester. Contoured neck line with double layer knit collar and self fabric insert. Tonal Quick Dry mesh inserts. The perfect classic look built to meet today's performance requirements.

BLW Black/White
MAW Maroon/White

ROW Royal/White
NVW Navy/White

GLD Gold/Gold
SLW Scarlet/White

Villa

#1005 YXS - AXL

The Villa is a traditional style made with 100% high sheen vertically knit ribbed polyester. 5mm piping with contrasting single needle construction provides design appeal with exceptional durability. Double Layer 2 color neck completes this style.



BLW



ROW

BLW Black/White
EMW Emerald/White
FOR Forest/White
MAW Maroon/White
NVW Navy/ White
ORB Orange/Black

PUB Purple/Black
ROW Royal/White
SLW Scarlet/White
SVB Silver/Black
TEB Teal/Black
WHB White/Black



SVB



TEB



MAW



ORB



FOR



PUB



EMW



SLW



WHB



NVW

#2023 YM-AXL

The Napoli is made with Admiral's 100% polyester Airwick Vapor Draw fabric. Quick Dry mesh inserts, with contrast air channels further enhance the moisture management properties of this short. Covered waistband with inner tie cord. Unlined.

Napoli

Admiral



WHB White/Black



ROW Royal/White



BLW Black/White

#2004 YS - AXL

The Team short is a great fitting short. Manufactured using Admiral's 100% high sheen vertically knit ribbed polyester. This short is designed with a double needle cover stitch for a subtle contrast and extra durability. Unlined.

Team Short



SLT Scarlet



ROY Royal



BLK Black

Superior Sock

#3600 (Child, Youth, Adult)

A very technical professional quality sock. Padded foot, ribbed articulated ankle, elastic arch support, knitted mesh at lower back of calf and on front of ankle for quick drying effect. Reinforced heel and toe.

BLW	Black/White	ROG	Royal/Gold
BLS	Black/Scarlet	NVW	Navy/White
ROW	Royal/White	WHN	White/Navy



ROG

Junior PT Short

#2000 YXS - AS

A longer cut short made from polyester Tricot. Inside draw cord, covered waistband. Long inseam. Without Admiral Logo.

BLK	Black
FOR	Forest
ROY	Royal
NAV	Navy
MAR	Maroon





Admiral Embellis

Admiral is able to provide its customers with a one stop shopping experience, providing professional quality uniforms and equipment as well as professional customization services. Admiral offers a wide range of embellishing services in house. These services include direct embroidery, screen printing, heat applied numbers and Insta-Twill applications.

Please contact one of our Team Representatives and they will be happy to help you finalize your embellishing needs. **1-888-646-6822**

Embellishing Services



Screen Printing

Description: Ink is printed directly onto the fabric of the item.

Usage: Screened logos on Jerseys, Shorts, Outerwear and Bags. Admiral offers a wide range of stock logo templates which can be customized with Club/Team names. Admiral is able to accommodate the printing of custom logos should they be required.

Embroidery

Description: Threads are directly stitched on to the fabric of the garment.

Usage: Enhance the look of your uniform by embroidering logos on Jerseys, Shorts, Outerwear and Bags. Admiral offers a wide range of stock logo templates which can be customized with Club/Team names. Admiral will work with you to create a custom logo from the templates on file.



L101

Admiral Logo Templates

Description: Admiral has a wide range of stock logo templates which can be screen printed or embroidered and can be customized with club or team names.



L102



L103



L104



L105



L106



L107



L108

hment Program



Vinyl Heat Transfer Numbers

Description: Vinyl numbers are heat applied directly to the fabric of the product. Available in 8", 6", 4" and 2".

Colours offered in 8", 6" and 4": White, Black, Royal, Navy, Red, Forest, Maroon and Gold. (Custom colors available, conditions apply)

Colours offered in 2": White. (Custom colors available, conditions apply)

Usage: Can be used to apply numbers to jerseys, shorts, outerwear and bags.



Insta-Twill Numbers

Description: Professional twill numbers with embroidered edges, applied by heat transfer. Available in 9.25", 4" and 2" sizes.

Colours offered in 9.25" and 4":

White/White, White/Black, Scarlet/White, Black/White, Royal/Royal, Gold/Gold, Navy/Navy.

(Custom colors available, conditions apply) Colours offered in 2":

White/White (Custom colors available, conditions apply)

Usage: Can be used to apply numbers to jerseys, shorts, outerwear and bags.



L109



L110



L111



L112



L113



L114



L115



L116

* Note: Custom Logos

Description: Should you already have a logo designed, Admiral can work with your camera ready artwork, or our professional artists will work to recreate your logo. Artwork fees will apply. Contact our Team Sales department for further details.



Ultra Sock



#3700 Child, Youth & Adult

The Ultra sock meets the highest professional standards. Featuring Coolmax®, this high performance sock also features a padded foot, ribbed articulated elastic ankle & arch support. Knitted mesh at lower back of calf and on the front ankle for added breathability. Reinforced heel and toe.

BLS	Black/Scarlet
BLW	Black/White
FOW	Forest/White
GLR	Gold/Royal
GLN	Gold/Navy
MAW	Maroon/White
NVW	Navy/White
ROG	Royal/Gold
ROW	Royal/White
SLW	Scarlet/White
WHB	White/Black
WHN	White/Navy
WHR	White/Royal
WHT	White/White



Premier Sock



#3500NL Child, Youth & Adult

Premier match quality sock with superior construction elements. Ribbed articulated elastic ankle & arch support. Reinforced toe and heel. 95% nylon and 5% spandex. Featured without Admiral logo.

- BLK** Black/Black
- BLS** Black/Scarlet
- BLW** Black/White
- FOW** Forest/White
- GLD** Gold/Gold
- GLR** Gold/Royal
- MAR** Maroon/Maroon
- NVW** Navy/White
- NVY** Navy/Navy
- ORG** Orange/Orange
- PUR** Purple/Purple
- ROG** Royal/Gold
- ROY** Royal/Royal
- ROW** Royal/White
- SKY** Sky/Sky
- SLW** Scarlet/White
- WHB** White/Black
- WHF** White/Forest
- WHR** White/Royal
- WHS** White/Scarlet
- WHT** White/White
- EMD** Emerald/Emerald





Milano Suit

#0808 YM-AXXL (Incl. YXL)

Soft high density twill fabric. Wind & rain resistant. Full micro mesh liner. Open Hem. Dropped tail. Elasticized draw cord with slider. Zippered pockets. Covered elastic wrists. Mesh overlays. The Pant is also fully lined. Zippered pockets and contrast inserts. Tailoring system allows pant length to be adjusted up to 1 ½ inches. Lower leg zipper opening with contrasting storm gusset.



BMW



ROW



BFW



BRW



BSW



BLW



NVW

BLW Black/White
BFW Black/Forest/White
BMW Black/Maroon/White

BRW Black/Royal/White
BSW Black/Scarlet/White
NVW Navy/White
ROW Royal/White

Avalon Jacket

#0804J YM-AXXL (Incl. YXL)

100% high count coated micro polyester jacket. Water and wind resistant. Micro mesh lined. Two exterior zippered pockets. Interior embroidery opening. Dropped tail. 3mm piping.



NVW



BSW



BLW



BRW

BLW Black/White
BRW Black/Royal/White
BSW Black/Scarlet/White
NVW Navy/White

Avalon Pant

#0804P YM-AXXL (Incl. YXL)

100% high count coated micro polyester jacket. Water and wind resistant. Micro mesh lined. Two exterior zippered pockets. Interior embroidery opening. Dropped tail. 3mm piping.

BLW Black/White

NVW Navy/White



#0809 YM-AXXL (Incl. YXL)

Velez Suit



The Velez has it all. Soft high density twill fabric. Wind & rain resistant. Full micro mesh liner. Open Hem. Dropped tail. Elasticized draw cord with slider. Zippered pockets. Storm flap. Velcro & elastic storm wrist closure. Mesh overlays. The Pant is also fully lined. Zippered pockets and contrast overlay stripes. Tailoring system allows pant length to be adjusted up to 1 ½ inches. Lower leg zipper opening with contrasting storm gusset.



BLW Black/White
FBW Forest/Black/White

MBW Maroon/Black/White
NVW Navy/White

ROW Royal/White
RBW Royal/Black/White
SBW Scarlet/Black/White

#0800J YM-AXXL (Incl. YXL)

100% coated nylon full zip shell jacket. Wind & water resistant. Open hem with draw cord. Two front slash pockets. Contrast set-in piping.

BLW Black/White
NVW Navy/White
ROW Royal/White



Tekno Pant

#0800P YM-AXXL (incl. YXL)

100% coated nylon shell pant. Wind & water resistant. Side seam pockets. Contrast set-in piping.

BLW Black/White
NVW Navy/White



Pasadena Jacket

#0801J YM-AXXL (Incl. YXL)

Manufactured using a heavier weight performance TTS Vapor Draw polyester. This jacket is the ideal game day or training piece. Complimented by contrast piping, a full front zipper and set-in zippered pockets. Covered elastic cuffs.



FBW



SBW



NVW



BLW



ROW



RBW



MBW

BLW Black/White
FBW Forest/Black/White
MBW Maroon/Black/White

NVW Navy/White
ROW Royal/White
RBW Royal/Black/White
SBW Scarlet/Black/White

Prestige Jacket

#0810J YM-AXXL (Incl. YXL)

This traditional knitted polyester jacket offers a classic design, combined with comfort and functionality. The Prestige has a full front zipper and slash side pockets, accented by two color knit ribbed cuffs and waistband.



SBW



BLW

BLW Black/White
SBW Scarlet/Black/White



Pasadena Pant

#0801P YM-AXXL (Incl. YXL)

Manufactured using a heavier weight performance TTS Vapor Draw polyester. Designed to coordinate with the Pasadena Jacket or The Catalina Pullover or can be worn alone at any time. Deep zippered side pockets and Admiral tailoring system allows pant length to be adjusted up to 1 1/2 inches. Lower leg zipper opening with gusset. (Shown above with Pasadena Jacket)



BLW Black/White



NVW Navy/White



ROW Royal/White

#6001 YM-AXXL (Incl. YXL)

Catalina Pullover



Manufactured using a heavier weight performance TTS Vapor Draw polyester. This Pullover is the ideal training piece. Complimented by contrast horizontal chest piping, open tapered cuffs, side pull tabs. Can be worn gathered at waist for training or open for comfort.



NVW



BLW



ROW



SBW

NVW Navy/White
BLW Black/White
ROW Royal/White
SBW Scarlet/Black/White

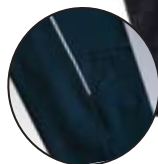
Elite Training Pant

#0802 YM-AXXL (Incl. YXL)

A Traditional training pant. Made with Admiral's heavier weight performance TTS Vapor Draw polyester. Tapered legs, zippered leg closure, elasticized gusset for improved fit on leg. Can be matched with Catalina Pullover or Pasadena Jacket. *(Pant shown with Catalina)*



Inset mesh panel



Tapered leg

NVW

BLW

ROW

BLW Black/White
NVW Navy/White
ROW Royal/White

Lightweight Training Top

#6122 AXS-AXL



BLS

BLR

BLW

100% brushed polyester PK fabric. Elasticized V-neck. Open hem bottom. Contrast self fabric inserts for style.

BLW Black/White
BLR Black/Royal
BLS Black/Scarlet





Stadio Pullover



SBW

#0808 YL-AXL

Designed for comfort, this Pullover incorporates all of the features that an Elite performance product should offer. Soft polyester PK Vapor Draw fabric, contrast mesh insets and an ergonomic cut.

- BRW** Black/Royal/White
- BSW** Black/Scarlet/White
- FBW** Forest/Black/White
- SVB** Silver/Black
- SBW** Scarlet/Black/White



BSW

BRW

FBW

SVB

Euro Training Pant

#0836 YL-AXL

Produced to be the ideal training pant. Tapered leg with 9" zipper on both calves with embroidered Admiral logos for style. Two side slash pockets make this pant a choice piece on cool days. 100% Soft PK Polyester.

- BLW** Black/White



Raven Pullover

#AV6500 YL-AXXL

No Logo. 85% polyester, 15% cotton. Very soft and durable. Ribbed neck trim & cuffs. Open hem. Elasticized draw cord. Dual cord locks. Featured with out Admiral logo.

- BLW** Black/White
- NVW** Navy/White



NVW



BLW



Revolution Jacket

Admiral

#0839WO AXS-AXXL

An updated version of an Admiral classic piece now comes without the hood to provide a more contemporary, stylish look. This coated 100% oxford nylon jacket is seam sealed and fleece lined to keep you completely dry and very warm on cold and rainy days. The Revolution features a storm flap with snap closure. Inner chest pocket. Covered zipper pockets. Elasticized Velcro wrist storm closure.

BLK Black



Northern Polar Fleece 1/4 Zip

6000 YL-AXL

100% Polyester micro polar fleece. Micro mesh inserts under the arms for breathability. The traditional front 1/4 zip makes this piece ideal for training on those cold days. Elastic waist and cuffs.

BLK Black



Trucker Cap/Beanie

#0925 Beanie / #0999 Trucker Cap (One Size Fits All)

BLK Black





Larnica 1/4 Zip



NSV



WHB



BLW

#1402 YL - AXXL

The Larnica is a comfortable sideline coaches or training jersey made with Admiral's polyester Interlock fabric. This is a moisture management piece. Features include a mock crew neck with 1/4 zip and contrast inserts for added style.

WHB White/Black
NSV Navy/Silver
BLW Black/White

Ventura Polo



BLW



ROW



WHB



NVW



SLW

#6002 YL - AXXL

A high performance Polo. The Ventura is constructed using 100% soft PK polyester Vapor Draw. It features a 4 button placket, saddle shoulder and set-in piping. A classic design.

BLW Black/White
NVW Navy/White
ROW Royal/White
SLW Scarlet/White
WHB White/Black

Touchline Polo



#AV610 YL-AXXL



BLW

No Logo. A favorite for team members and supporters. The raglan style polo is constructed with our moisture management polyester Air Vick fabric. Features include front zipper with a tonal self backing, while micro mesh quick dry inserts under the arms allow air flow to cool body. Tailored collar and contrast piping. Featured without Admiral logo.

BLW Black/White



Corporate T-Shirt



#0704-WHT

#0707-GRY YS-AXL

100% Heavy Weight Cotton T-Shirt.

Tactic Short

#2496 YL - AXL

This short was built for on field training or off field casual wear. Knit short with anatomically placed mesh for breathability. Elasticized waist band, inner draw cord. 100% Woven polyester. Side and back pockets.

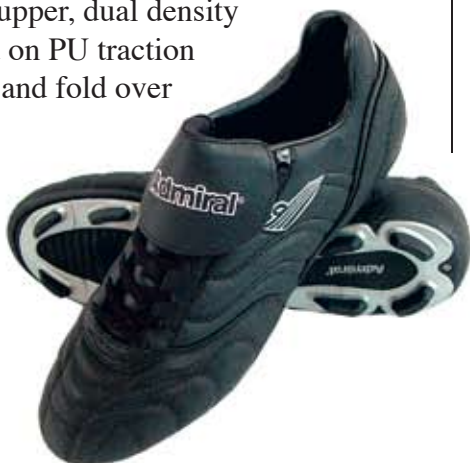
BLK Black



Cup MPT

#9970 Size 5 to 13 (Including ½ sizes)

The Cup features a supple full grain leather upper, dual density stitched on PU traction outsole and fold over tongue.



Ankle Sock

#3550 Adult (10-13)

¼ sock. Padded foot. Ribbed articulated arch support. Reinforced heel and toe.

WHN White/Navy





Compression Undershirt Short Sleeve

#1403-LS YL - AXL

High density 82/18 Nylon/Lycra fabric. Moisture management technology reduces body temperature & increases comfort by drawing perspiration away from the body.

BLK

Black

WHT

White



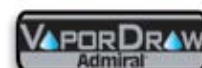
Compression Undershirt Long Sleeve

#1403 YL - AXL

High density 82/18 Nylon/Lycra fabric. Moisture management technology reduces body temperature & increases comfort by drawing perspiration away from the body.

BLK Black

WHT White



Compression Short

Compression Short #2497 AXS - AXL

90/10 Polyester/Elastane. Wide comfortable covered waistband. Reinforced seams. Designed to provide comfort, support & protection from field abrasions.

BLK Black

WHT White



Derby Ref Jersey



BLK



SLB



GLB

#1501 YL – AXL

Moisture management SPK fabric. 2 part Velcro patch for association badges. Tonal Micromesh inserts for breathability and style.

BLK Black/Black

SLB Scarlet/Black

GLB Gold/Black



Carder Ref Short

Carder Ref Short #2501 YL -AXL

Side seam & back pockets with velcro closure. Micro mesh inserts on back for air flow.



BLK Black



Premier Ref Sock

#3500NL Child, Youth, Adult

Premier quality sock. Ribbed articulated elastic ankle & arch support. Reinforced toe and heel. 95% nylon and 5% spandex. Durable. Featured without Admiral logo.

BLW Black/White



Official s/s Ref

#1502 YL – AXL (incl. YXL)

100% PK moisture management polyester. Sculpted self fabric cross over V-neck. 2 part Velcro patch for association badges. One breast pocket. Tonal V neck & Collar.

BLK Black/Black





Pro GK



SKB

#1811 YM -AXL

A high quality cut piece designed Keeper jersey with quick dry micro mesh inserts. 100% polyester Interlock with Vapor Draw. Sculpted padded elbows

ORB Orange/Black

SKB Sky/Black



ORB



Baha GK Short

#2583 YM-AXL

A perfect fit. 100% heavyweight polyester flat pique fabric. Durable. Full cut. Quilted padded hips. Large waistband and contrast piping.

BSV Black/Silver



Lima



BSKS

LMB

GLB

#1809 YM – AXL

100% polyester. Interlock fabric with Vapor Draw. Cut piece design. Sculpted padded elbows. Contrast micro mesh insert under the arms and below neckline. Set-in piping. Drop tail with binding.

BSKS Black/Sky/Silver

LMB Lime/Black

GLB Gold/Black



GK Padded Compression

#2582 YL – AXL



High density 82/18 Nylon/Lycra fabric. Wide comfortable covered waistband. Reinforced seams. Removable perforated pads. Designed to protect keepers from field abrasions.

BLK Black

Seville GK Pant

#2591 YM – AXL

100% heavyweight polyester flat pique fabric. Quilted padded hips and knees. Large waistband. Contrast Silver piping. Stirrups.

BSV Black/Silver





Balls



#4007 Aerial Premier Sizes 4 & 5

An Elite ball. Features a 1.5 mm PU Microfiber casing and is further enhanced with Admiral's Air Mattress System and a superior PK Latex bladder. The Aerial Premier will take your game to new heights!



#4006 Premier Flight Sizes 4 & 5 (NFHS)

Professional Match Ball Standard quality. A 1.5 mm PU Microfiber equipped with a PK latex bladder for optimal performance, the Premier Flight will meet all your match ball requirements. NFHS Approved.



#4005 Aerial Pro Sizes 4 & 5

Distinct in its surface finish; the Aerial Pro combines the proven qualities of the Pro Flight with added performance of Admiral's Air Mattress System. Superior touch and control are the key features of this 1.5mm PU 4 fold casing with latex bladder offering.



#4075 Pro Flight Sizes 4 & 5 (NFHS)

Competitive Match Ball with proven quality. Soft and lively. 1.5mm PU 4 fold casing. Latex bladder. Superior ball. NFHS Approved.

WRB White/Royal/Black

WSB White/Scarlet/Black

Balls



#4008 BRASILIA Sizes 3, 4 & 5

#4004 AERIAL ATTACK Sizes 3, 4 & 5

The Brasilia is a training ball constructed from a 1.4mm PVC cover. 4 ply PV lamination and butyl bladder. Customization available upon request.

Entry priced ball featuring a 4 fold 1.0 mm PU casing! Equipped with a butyl bladder, the Aerial Attack is the ideal club or team game & practice ball.



#4003 GENESIS Sizes 3, 4 & 5

WHR White/Royal

WHB White/Black

Like its design, this ball is engineered to last. Featuring high density 1.4 mm PU/PVC carbonium lamination casing and a butyl bladder.

4077 Mini Xtreme Size 2

Skills ball. 32 panel PVC lamination.





Legend HoldAll



RBW

#0903 25" x 12" x 12"

The latest bag development from Admiral! This medium team bag is constructed in Admiral's 420D nylon and features Admiral's unique two-way zipper which drops to the front panel of the bag. An inner gusset ensures that your products stay confined to the body of the bag while open. Two side pockets, including one wet/dry compartment provide space for all your gear. Padded shoulder strap with Admiral logo.



MBW



NVW



ROW



BLW

- BLW** Black/White
- MBW** Maroon/Black/White
- NVW** Navy/White
- ROW** Royal/White
- RBW** Royal/Black/White
- SBW** Scarlet/Black/White



SBW



SBW Scarlet/Black/White Large side pockets



Ball compartment



- ROW** Royal/White
- RBW** Royal/Black/White
- BLW** Black/White
- NVW** Navy/White



BLW



NVW



ROW



RBW

Pro Back Pack

#0910 19" x 17" x 10"

New for 2009, this backpack has all the features for today's player. Constructed in Admiral 420D bright nylon, the Pro offers a very large cavity with an engineered wet/dry ball compartment. Two large side pockets with mesh panels allow for ease of storage for larger items. Adjustable, padded shoulder straps, internal personal storage pocket and an additional front compartment round out this bag's many features.

Olympico



#0902 24" x 12" x 12"

The Olympico bag is made of 600D Polyester. Two separate side pockets, one of which is a ventilated wet/dry compartment, allow for storage of footwear, a ball or wet clothing. #10 industrial zippers on main compartment. #8 light industrial zippers on the sides. Removable padded shoulder strap. Velcro handle wrap. Contrast piping.

BLW Black/Forest/White

BRW Black/Royal/White

BSW Black/Red/White

BLW Black/White

ROG Royal/Gold

BMW Black/Maroon/White

NVW Navy/White

ROW Royal/White

Olympico Small

#0902SM 20" x 11" x 11"

A smaller version of the original. It is made of the same 600D Polyester. Two separate side pockets, one of which is a ventilated wet/dry compartment, allow for storage of footwear, a ball or wet clothing. This bag is great as a coaches kit bag, or simply as a small alternative.

BLW Black/White



Olympico Large

#0902LG 30" x 13.5" x 13.5"

A larger version of the Olympico with a 5 inch longer central compartment and larger in height and width. It is made 600D Polyester with two separate side pockets, one of which is a ventilated wet/dry compartment, allowing for storage of footwear, a ball or wet clothing. This bag is great for the serious player who needs extra storage.

BLW Black/White





Field Backpack



SBW



ROW



NVW



BLW



RBW

Field Backpack #0909 18" x 17" x 9"

600 D Polyester. Two side pockets with mesh panels. Front ball pocket with mesh panels. Adjustable, padded shoulder straps. Large main compartment with U shaped opening.

BLW Black/White

NVW Navy/White

ROW Royal/White

RBW Royal/Black/White

SBW Scarlet/Black/White

Sideline



Sideline Shoulder Bag #0922

18" x 13" x 6"

The Sideline Shoulder bag is perfect for coaches and managers. 600D Polyester, screened Admiral logo on front flap.

BLK Black

#0923 Deluxe Footwear/Accessory Bag

14" x 9" x 5"

600D polyester. Double zipper pull. Velcro closure. Web handle & shoulder



#0924 19" x 15.5"

Drawstring Shoulder Bag



SLT Scarlet

ROY Royal

BLK Black

NVY Navy

420D nylon. Grommets. Adjustable shoulder braid. Printed logo. Large area for club/team logos.

Team MegaHold

#0920 32" x 14" x 15"

Designed for all of your team's larger items including uniforms, balls, training equipment, water bottles, and goal nets.



Admiral®

THE WORLD IS WATCHING



ADMIRAL NORTH AMERICA

81 Granton Dr., Unit #2
Richmond Hill, ON L4B 2N5

Tel: 905.731.5890
Toll Free: 1.888.646.6822
Fax: 905.731.3160

www.admiralsoccer.com
www.accessoriesunlimited.biz



Disclaimer: Some product was embellished for photographic purposes only. All products are shipped blank unless otherwise requested. Please refer to pages 20-21 or contact Admiral directly for information on embellishing options available.

Admiral North America and Accessories Unlimited
are Divisions of
The Axis Sports Group of Companies

\$2.50