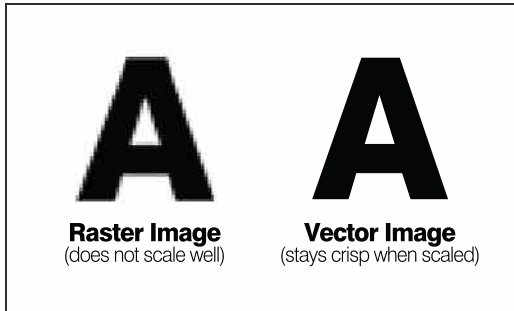




To avoid art charges and ensure your design or logo is printed correctly and in the highest level of quality, there are a few specifications that need to be met.



- All files must be in .EPS, .AI or .PDF format.
- All contents on the art file should be converted to vector.
- All fonts must be converted to outlines / vectors.



- If possible, all colors should be converted to spot colors with correct Pantone numbers.
- If Pantone numbers are not included in the artwork, these must be provided when the artwork is sent.
- Send additional .JPG or PDF version of the file to communicate color representation if the file does not display color the way you want it printed.

- Art files must be submitted with images sized for printing,
  - If the size is not correct on the art file, we would ask that you advise the print width.



- Compress large files (**over 10 MB**).
- Files need to be flattened.
- An art fee of \$25 may be applied if revisions are required to the art file.

# Art Requirements